

NOTES FOR SERVICE CREWS

Read these instructions carefully, and exercise care and courtesy when driving through towns and villages on route.

Each registered Service Vehicle is issued with a Rally Service Plate which must be affixed to the vehicle's windscreen. This plate will bear the letter 'S' and a number corresponding to that of the competitor receiving the Service Pack where practical.

Service Crews and Management Crews **MUST** follow the instructions given regarding Service Areas and the route between them. Any Competitor whose Service or Management Vehicle is *observed* in an OUT OF BOUNDS area will be penalised 10 minutes for the first offence and by EXCLUSION from the results for the second offence; any Competitor *receiving assistance* from a Service or Management Vehicle in an OUT OF BOUNDS area will be EXCLUDED on the **first offence** (see Art. 17.8).

All the above vehicles will be allowed into the main Service Area.

Time Controls are situated at the exit of each main service area and service crews must follow the instructions of marshals at these controls.

Regrouping will operate in service areas A and B, to close up any gaps and keep the rally together as much as possible.

Judges of Fact will be patrolling the road sections and service crews are reminded that their associated competing car may be penalised for any infringement of the servicing regulations - including excessive noise, bad driving manners, etc. (see Art. 17.6).

In the event of their competitor retiring within a special stage, service crews may wait at the start of the stage until it closes and they will then be allowed to enter to retrieve the car under the instruction of the stage commander.

As usual the various Police Authorities will be observing the Rally and speed checks may be expected during the event.

SERVICING & SERVICE AREA

Competitors are reminded that they are responsible for the conduct of their service crews.

ONLY vehicles registered with the organisers and visibly displaying their Service Plate will be allowed to enter the service area.

NO RALLY PLATE - NO ENTRY

SERVICE LOCATION

FIRST CAR DUE TIME ALLOWED

A DOLGELLAU	10.46 hrs.	Minimum service time 20 minutes
Entry - 124/735181 ¹ / ₂		
Servicing in Farmers Mart complex.		
Hot food and drinks will be available as well as male & female toilets.		
B DOLGELLAU	13.28 hrs.	Minimum service time 20 minutes
Entry - 124/735181 ¹ / ₂		

The designated SERVICE ROUTE

Start at Oswestry to Dolgellau

Turn right out of Bulldog Rally Base, onto B4579 towards A5

A483 from Mile End roundabout to Llyncllys

A495 from Llyncllys to Melin-y-ddôl

A458 Melin-y-ddôl to Mallwyd

A470 Mallwyd to Dolgellau

A494 to Farmers Mart from A470

Dolgellau to Finish at Oswestry.

A494 from Farmers Mart to A470

A470 from junction A494 to Mallwyd

A458 from Mallwyd to Melin-y-ddôl

A495 from Melin-y-ddôl to Llyncllys

A483 from Llyncllys to Mile End roundabout

B4579 to Bulldog Rally Base.

SUMMARY OF COMPETITOR'S RALLY MILEAGES

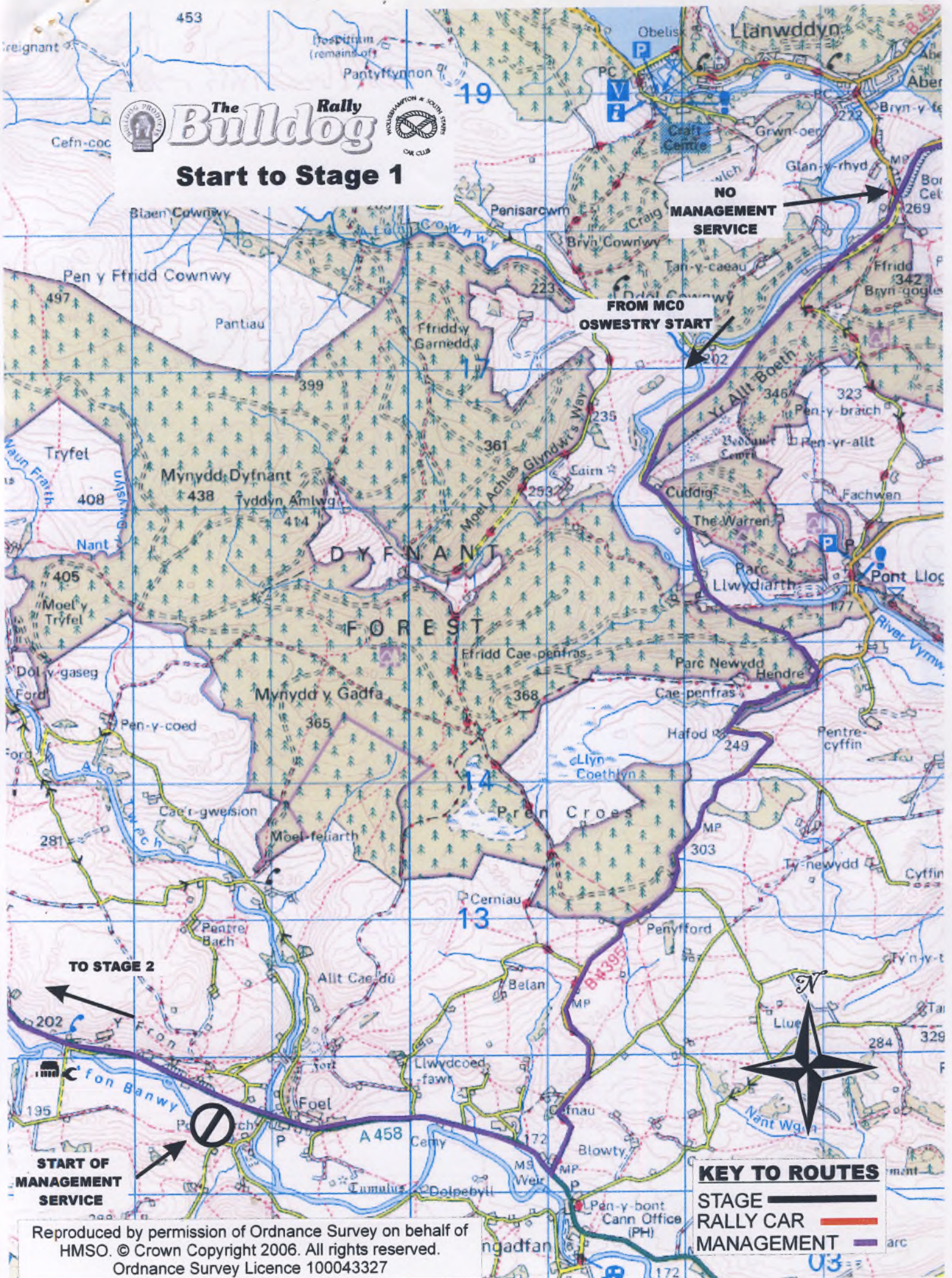
<u>Rally Section</u>	<u>Road Miles</u>	<u>Stage Miles</u>	<u>No. Of Stages</u>
Start to Service A	62	26	2
Service A to Service B	35	26	2
Service B to Finish	60	18	3



The Bulldog Rally



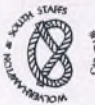
Start to Stage 1



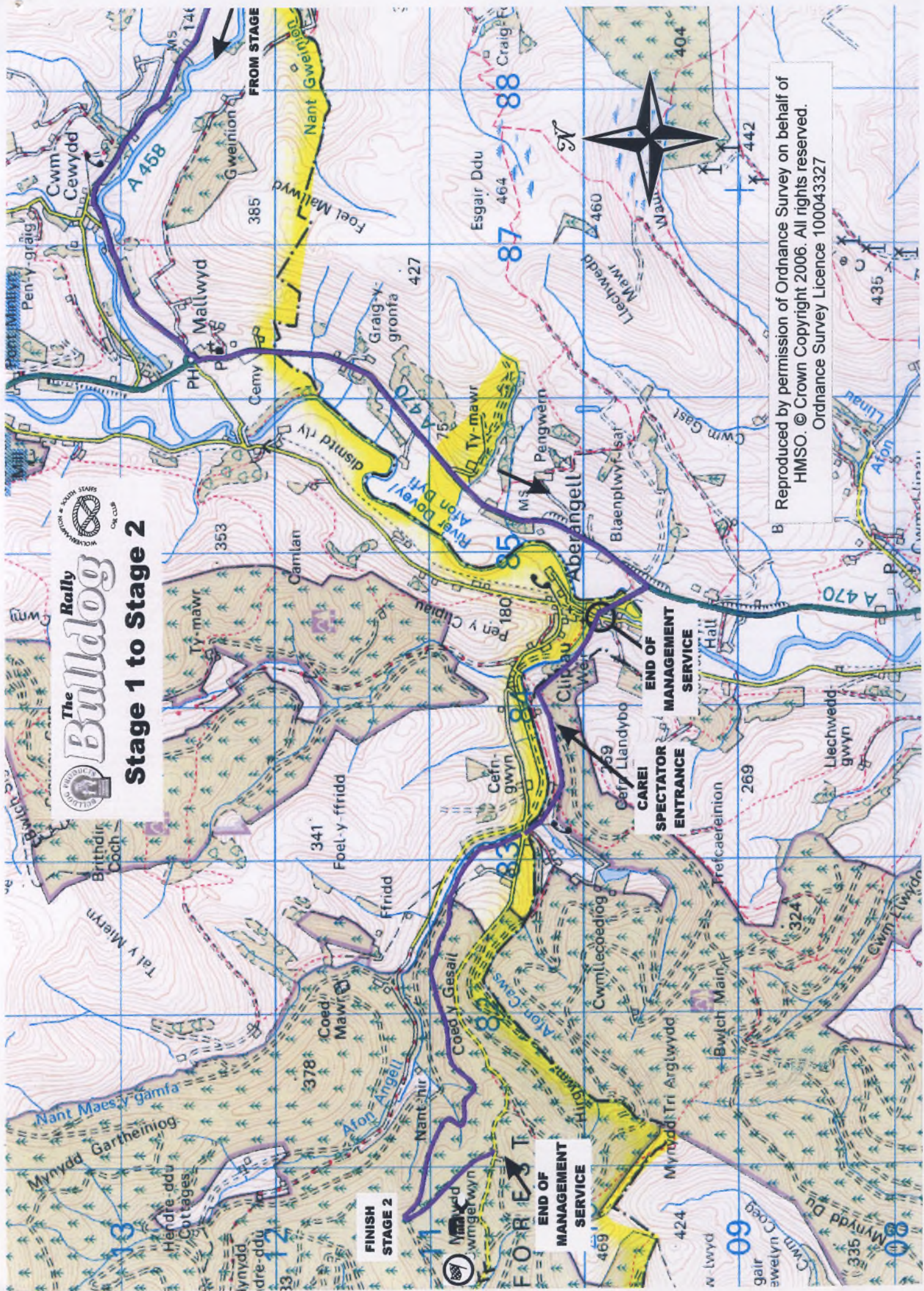
KEY TO ROUTES

- STAGE
- RALLY CAR
- MANAGEMENT

Reproduced by permission of Ordnance Survey on behalf of HMSO. © Crown Copyright 2006. All rights reserved. Ordnance Survey Licence 100043327



Stage 1 to Stage 2



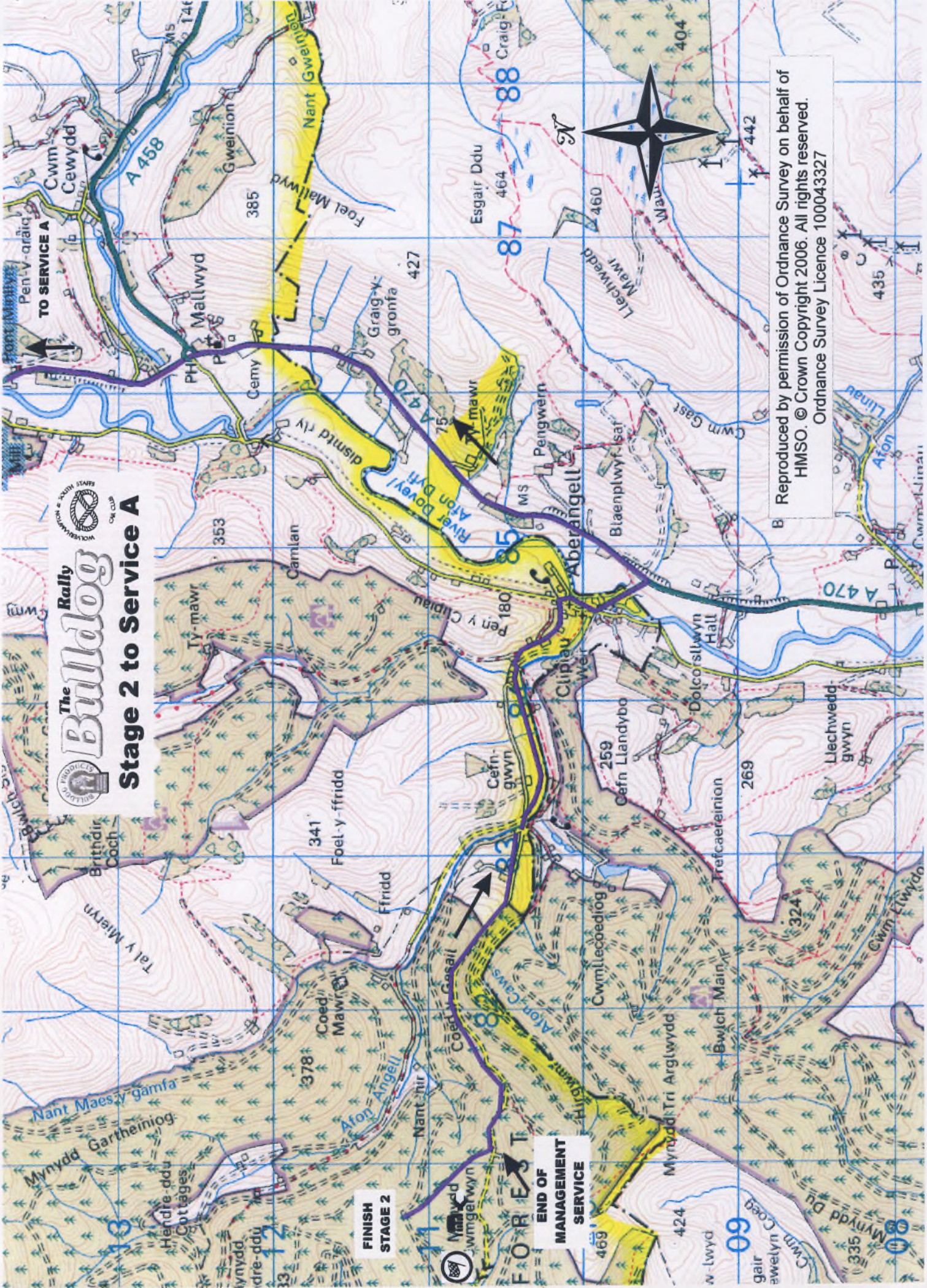
**FINISH
STAGE 2**

**FORREST
END OF
MANAGEMENT
SERVICE**

**CAREI
SPECTATOR
ENTRANCE
END OF
MANAGEMENT
SERVICE**

B Reproduced by permission of Ordnance Survey on behalf of
HMSO. © Crown Copyright 2006. All rights reserved.
Ordnance Survey Licence 100043327

The Rally
Bulldog
Stage 2 to Service A

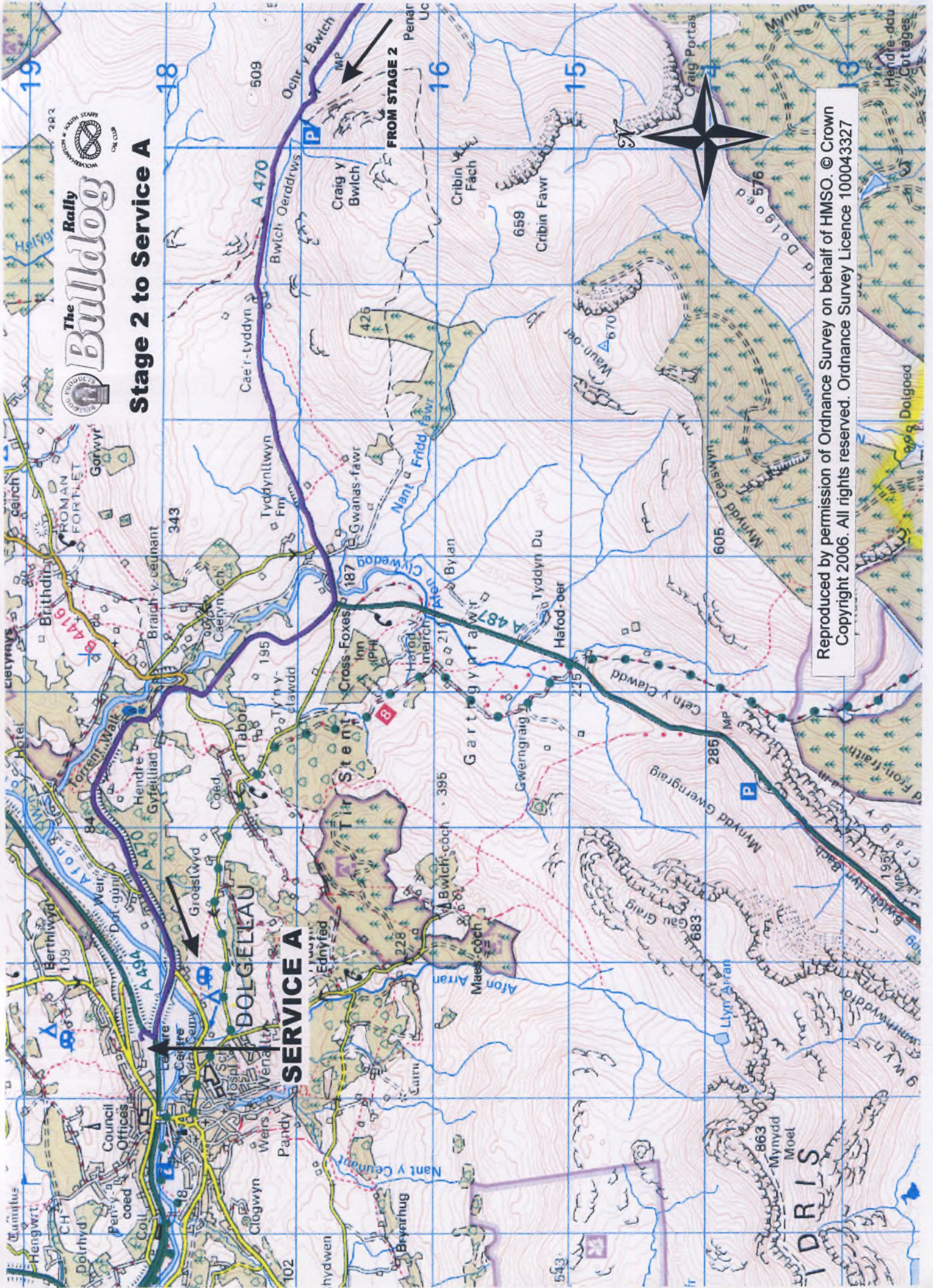


FINISH STAGE 2

END OF MANAGEMENT SERVICE

Reproduced by permission of Ordnance Survey on behalf of HMSO. © Crown Copyright 2006. All rights reserved.
 Ordnance Survey Licence 100043327

Stage 2 to Service A

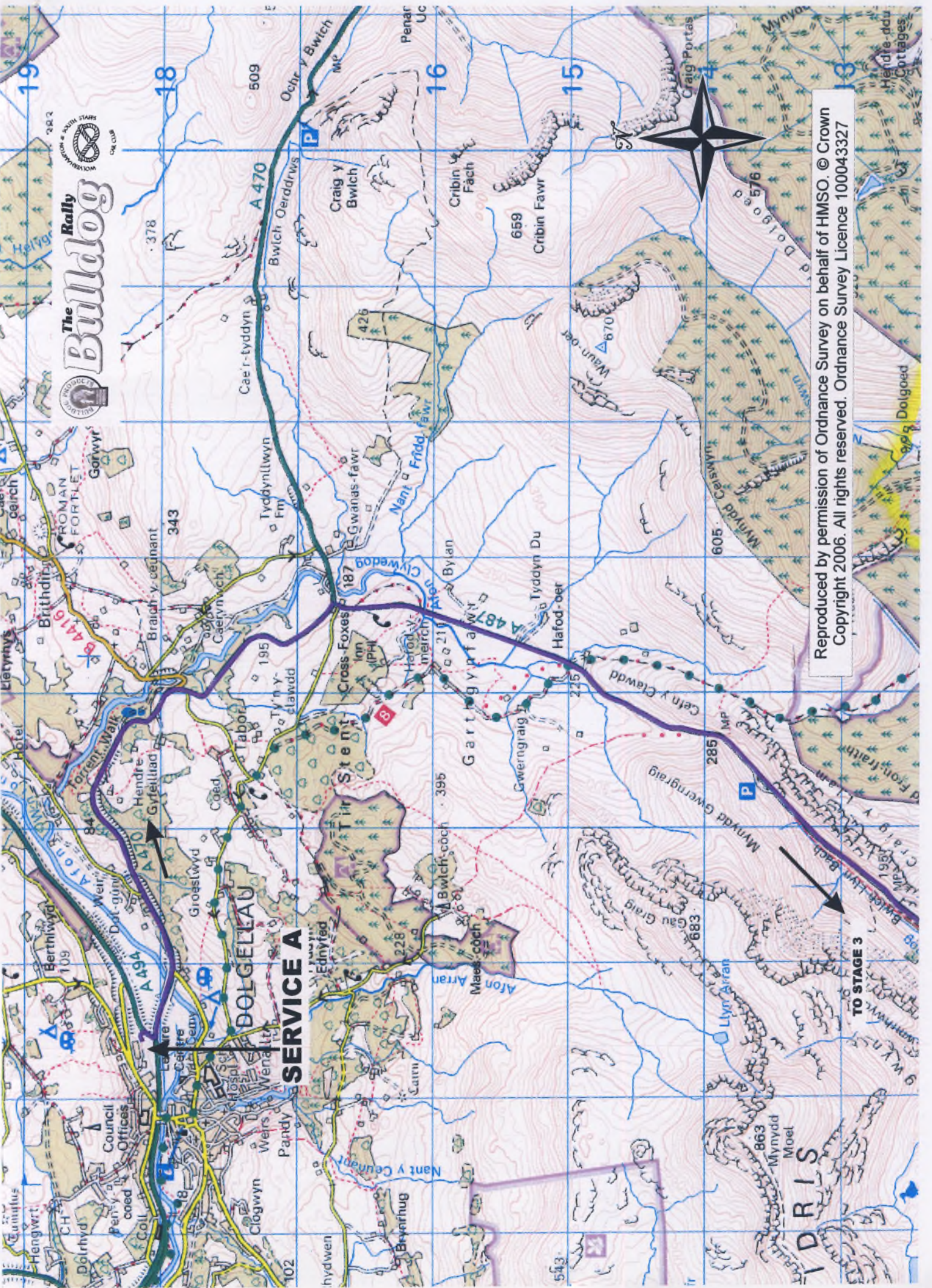


Reproduced by permission of Ordnance Survey on behalf of HMSO. © Crown Copyright 2006. All rights reserved. Ordnance Survey Licence 100043327

The Rally Bulldog



WELSH RALLY & MARATHON STARS
ON COURSE



Reproduced by permission of Ordnance Survey on behalf of HMSO. © Crown Copyright 2006. All rights reserved. Ordnance Survey Licence 100043327

SERVICE A

DOLGELLAU

TO STAGE 3

TIDRIS

19

18

16

15

13

282

509

378

343

195

84

109

102

187

211

228

18

395

395

228

102

426

659

187

211

395

228

102

275

275

275

102

285

285

285

102

605

605

605

102

576

576

576

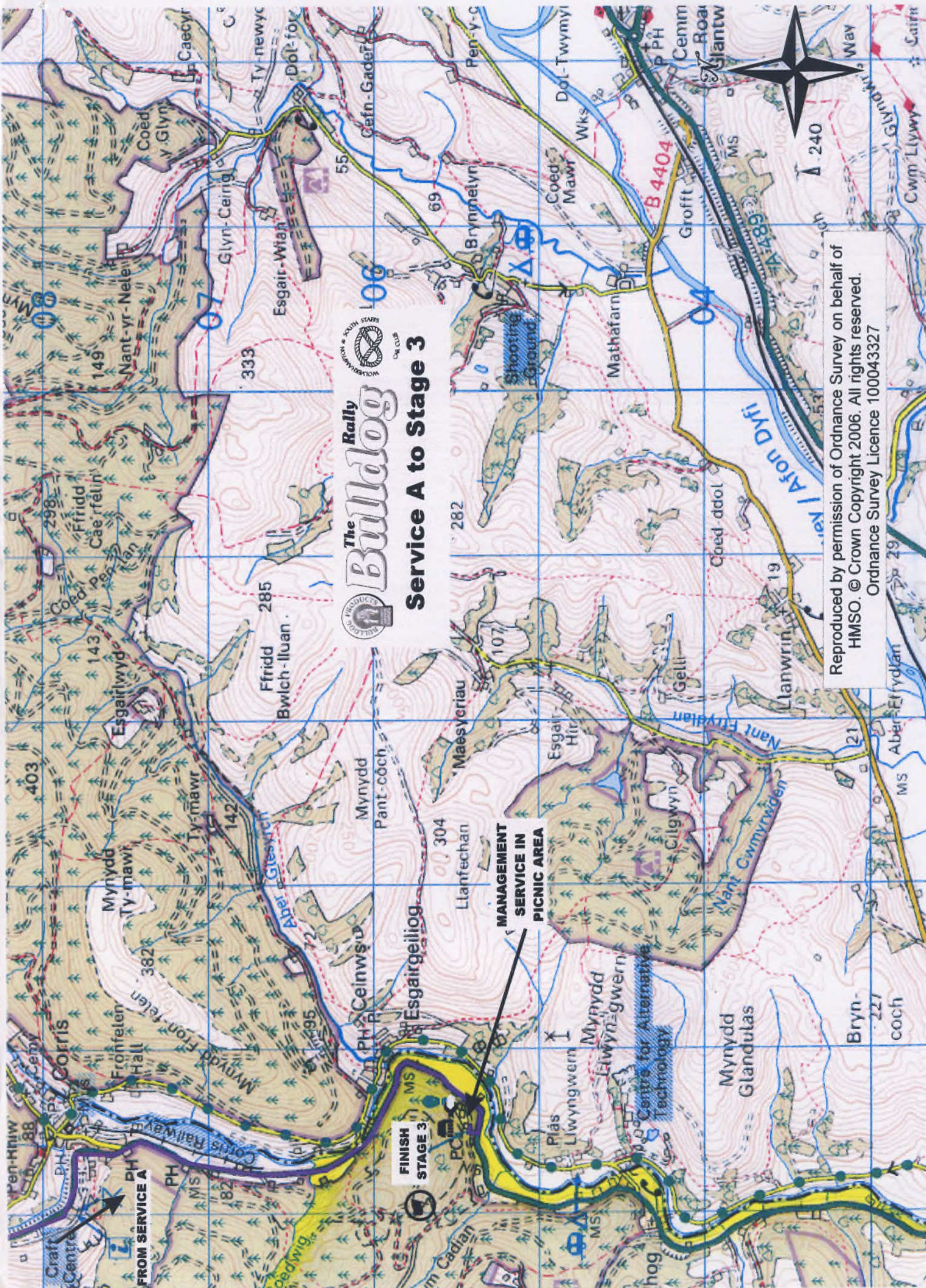
102


576

576

576

102




The Bulldog Rally
Service A to Stage 3

Reproduced by permission of Ordnance Survey on behalf of
 HMSO. © Crown Copyright 2006. All rights reserved.
 Ordnance Survey Licence 100043327



FROM SERVICE A

FINISH STAGE 3

MANAGEMENT SERVICE IN PICNIC AREA

240

Bryn-coch

Mynydd Glandulas

Mynydd Eiwyn-gwern

Plas Liwyngwern

Esgairgeiliog

Ceinwis

Aber Gwesych

Ty-mawr

Esgairwyd

Ffridd Bwlch-Iluan

Ffridd Cae'r-felin

Llanwrin

Coed-ddol

Afon Dyfi

Mathafarn

Coed Mawr

Brynnelwyn

Pen-y-c

Cefn-Gader

Dol-fof

Ty-newyc

Caecyr

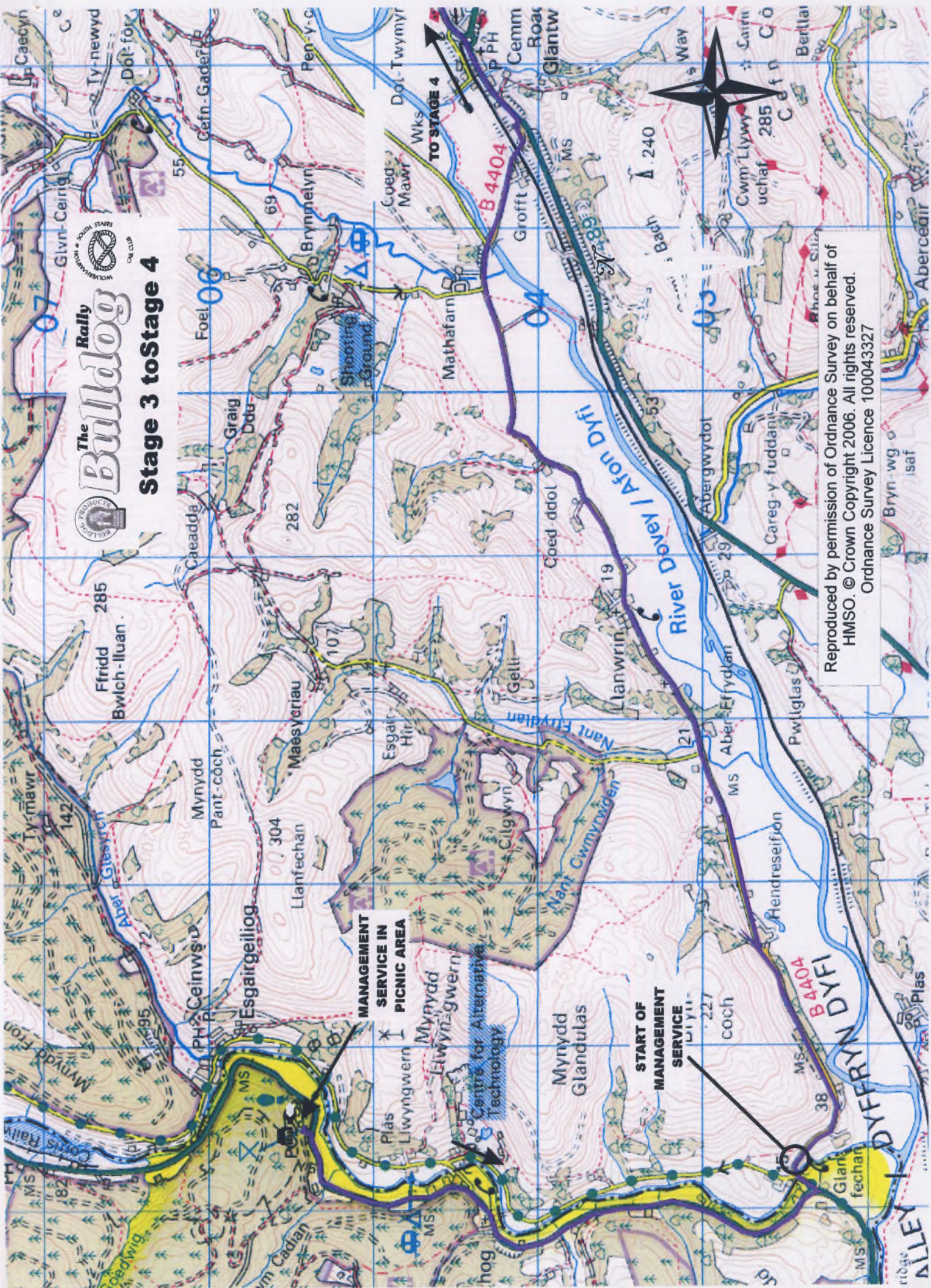
Nant-yr-Neleir

Pen-hniw

Craig

The Rally Bulldog

Stage 3 to Stage 4



MANAGEMENT SERVICE IN PICNIC AREA

START OF MANAGEMENT SERVICE

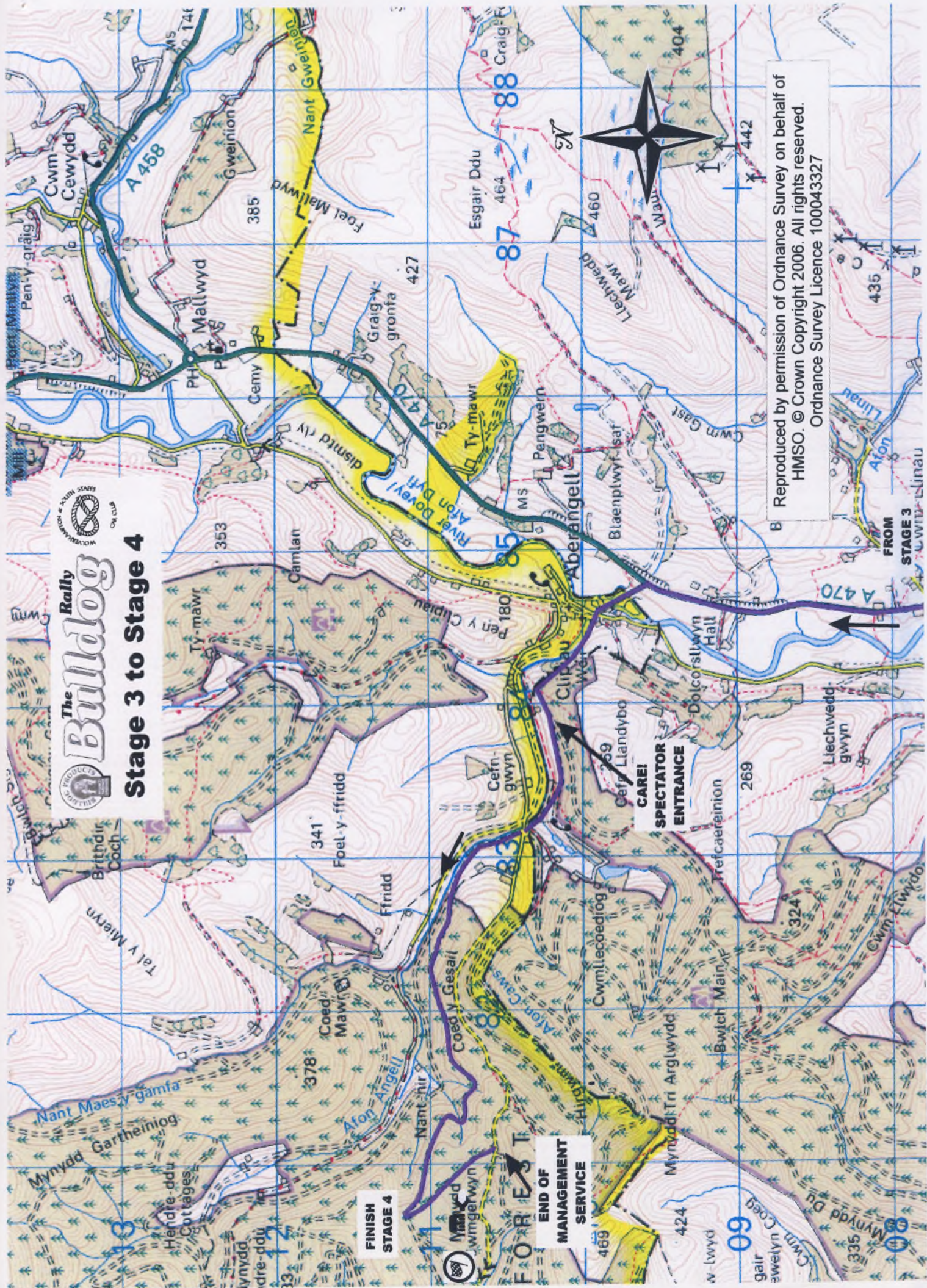
Centres for Alternative Technology

Reproduced by permission of Ordnance Survey on behalf of HMSO. © Crown Copyright 2006. All rights reserved.
Ordnance Survey Licence 100043327

The Rally
Buildog
Stage 3 to Stage 4



PHOTOGRAPHY BY STAFF
 ON CLIP



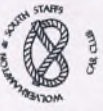
Reproduced by permission of Ordnance Survey on behalf of
 HMSO. © Crown Copyright 2006. All rights reserved.
 Ordnance Survey Licence 100043327

**FINISH
 STAGE 4**

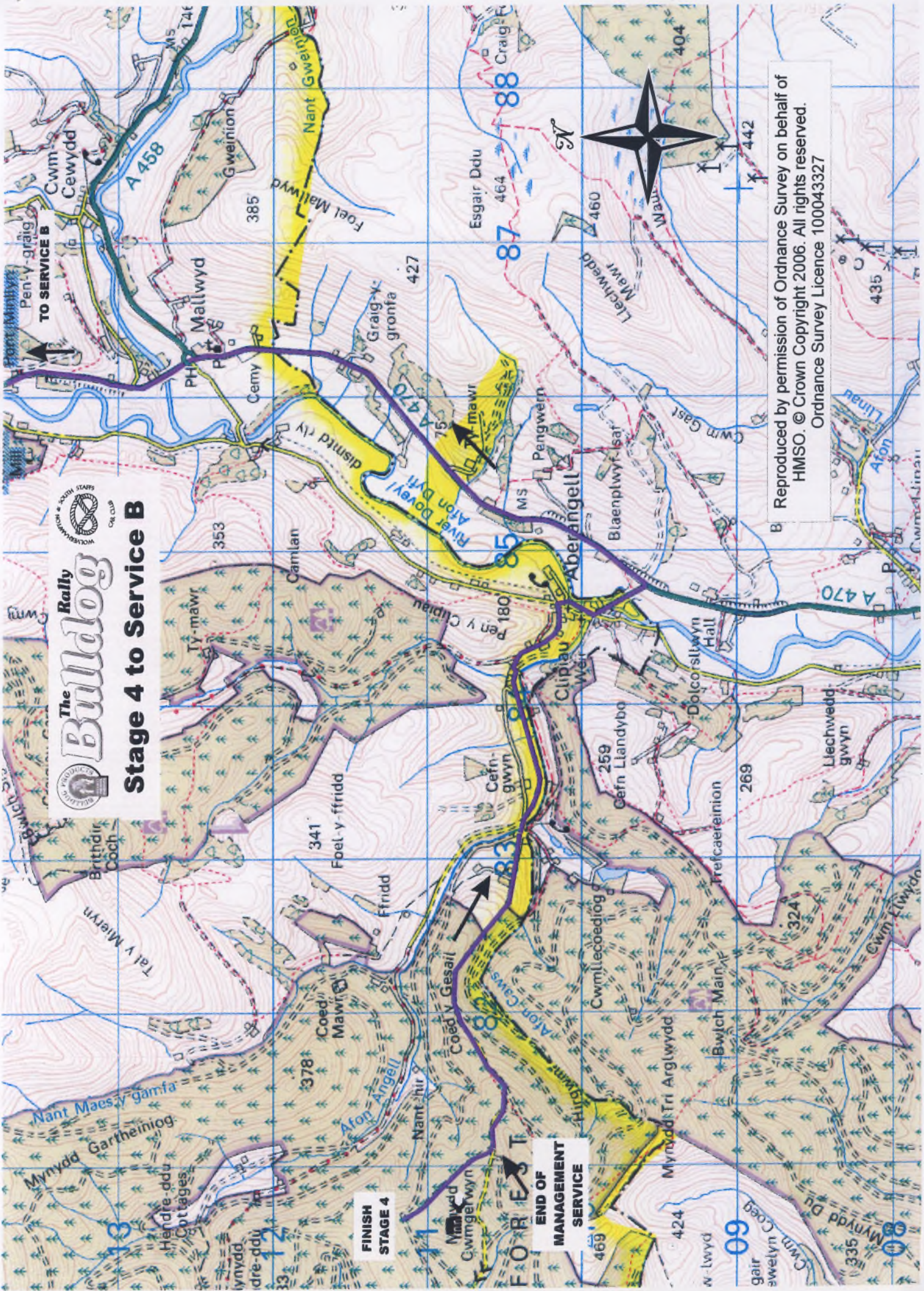
**FOR EST
 END OF
 MANAGEMENT
 SERVICE**

**FROM
 STAGE 3**

The Rally Bulldog



Stage 4 to Service B

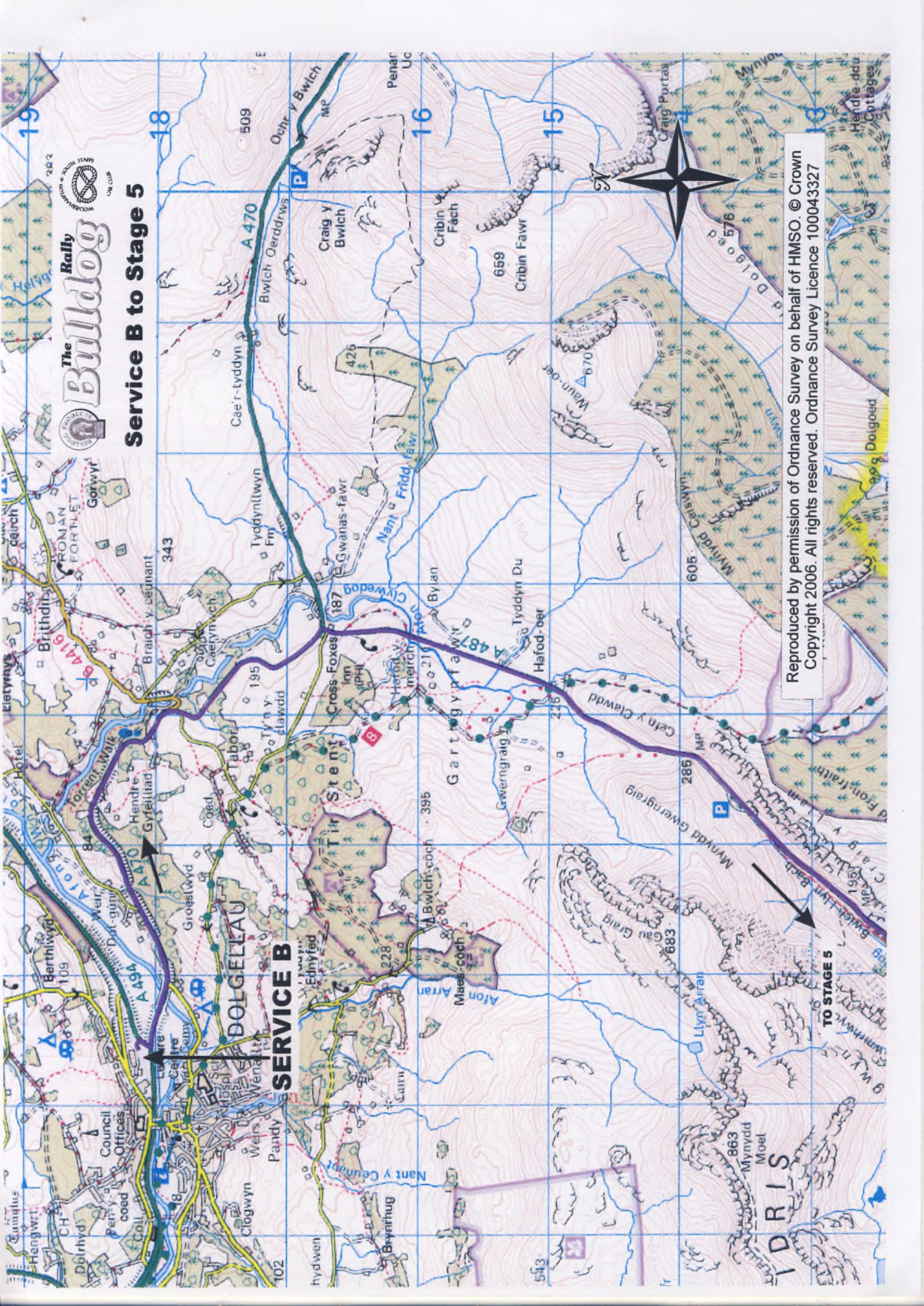


B Reproduced by permission of Ordnance Survey on behalf of HMSO. © Crown Copyright 2006. All rights reserved.
Ordnance Survey Licence 100043327

FINISH STAGE 4

**FOR EST
END OF
MANAGEMENT
SERVICE**

TO SERVICE B



The Raily Buildlog

Service B to Stage 5

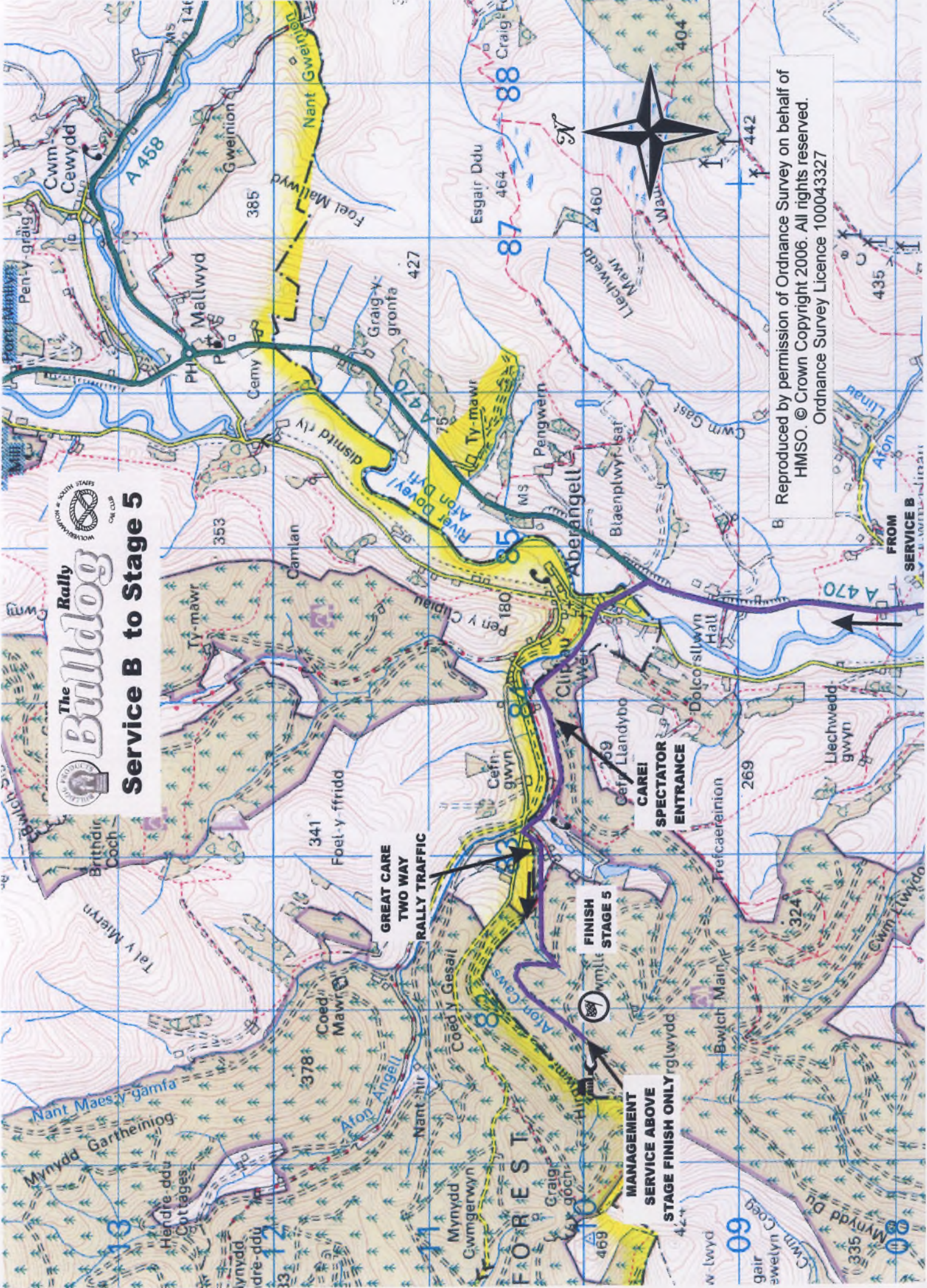
Reproduced by permission of Ordnance Survey on behalf of HMSO. © Crown Copyright 2006. All rights reserved. Ordnance Survey Licence 100043327

SERVICE B

TO STAGE 5



Service B to Stage 5



MANAGEMENT SERVICE ABOVE STAGE FINISH ONLY

FINISH STAGE 5

CAREI SPECTATOR ENTRANCE

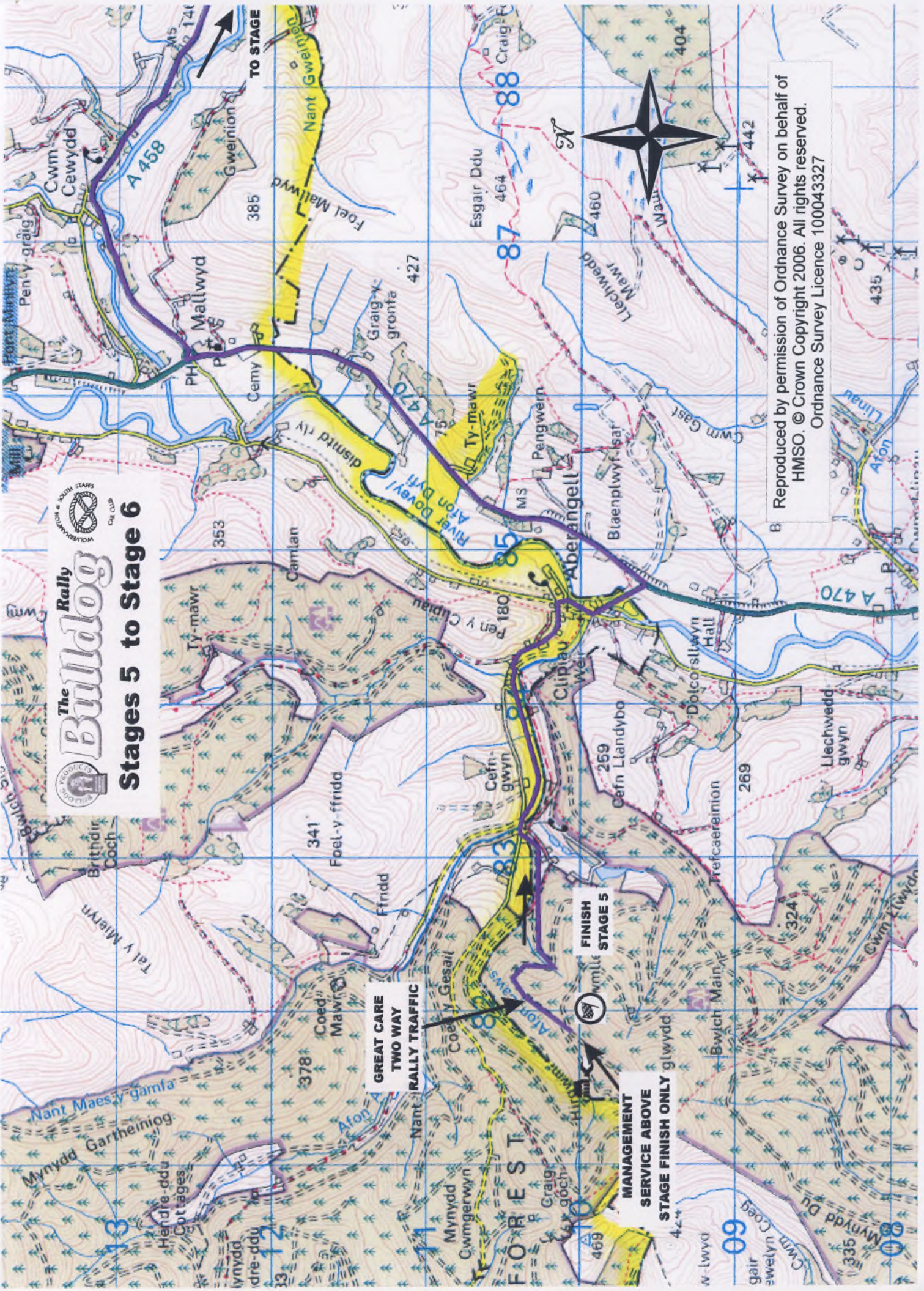
GREAT CARE TWO WAY RALLY TRAFFIC

Reproduced by permission of Ordnance Survey on behalf of HMSO. © Crown Copyright 2006. All rights reserved.
Ordnance Survey Licence 100043327

FROM SERVICE B



Stages 5 to Stage 6



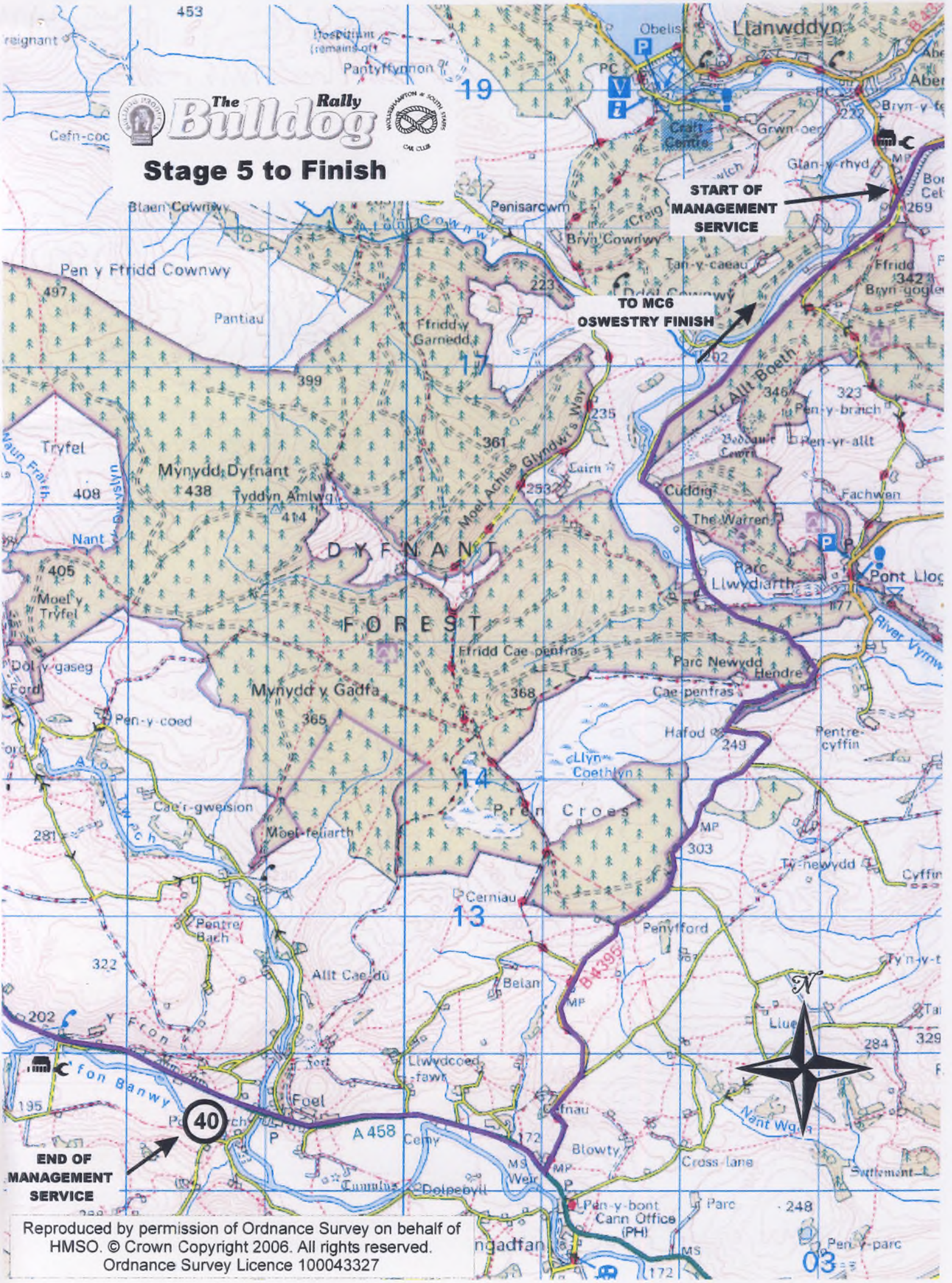
Reproduced by permission of Ordnance Survey on behalf of
HMSO. © Crown Copyright 2006. All rights reserved.
Ordnance Survey Licence 100043327



The Bulldog Rally



Stage 5 to Finish



START OF MANAGEMENT SERVICE

TO MC6 OSWESTRY FINISH

END OF MANAGEMENT SERVICE



Reproduced by permission of Ordnance Survey on behalf of HMSO. © Crown Copyright 2006. All rights reserved. Ordnance Survey Licence 100043327