

# THE BULLDOG RALLY 2001

## Competitors Information Number 2

Info2

### Foot and Mouth Disease

The organisers have been informed that there will be a small fee levied by local Council for each car treated with disinfectant in Shrewsbury. A contribution towards this cost will be collected from the competitors at documentation.

### Attended Parking

The organisers are pleased, now to be able to provide attended parking overnight in Shrewsbury following a last minute offer from Loosemoors Transport Services. The site is less than a mile from scrutineering on the A53. A location plan is attached. The parking area will be open between 09.00 and 22.00 hrs. on Friday and 08.00 - 22.00 hrs on Saturday only.

### A reminder of the Red Flag Procedure

The Red Flag system (K24.2.7 and K25.10) will operate on stages 1, 4 and 8. Competitors shown a red flag on a stage "must cease competition and come to a standstill at the side of the road or track as soon as possible. They must not continue until advised to do so by an official of the event."

### Arrowing

It is confirmed that in conformity with MSA Regulation K28.8.2 and page 167 of the Competitors' Yearbook 2001 the stage arrowing will be to a minimum. A revised arrowing system diagram is attached.

### Stage start procedure

The following correction should be applied to the regulations-

#### ARTICLE 15. TIMING AND CONTROLS

##### 11. Timing Controls.

##### b) Special Stage Arrival Control (SSA)

At this time control the marshal will enter the competitor's time of arrival and the provisional starting time for the special stage which must be a **minimum of 3 minutes** after the arrival time in order to allow the crew to prepare for the stage. The area between the Special Stage Arrival Control and the Stage Start is Parc Fermé but should the crew need to change a flat tyre a maximum of 5 minutes extra will be allowed without penalty and the start time amended accordingly. Any time in excess of this 8 minutes will be penalised in accordance with K31(d).

### Start Time List

A list of due start times is attached. These times will **NOT** be amended after scrutineering – **THESE ARE ACTUAL START TIMES.**

### Petrol on road section 8

Particularly for the information of Bulldog Historic Competitors petrol is available in on the road section Stage 8 to the Finish, from roadside filling stations on the route in both Llanfyllin (Bulldog Road Book Page 48/Historic Road Book Page 31- Diagram 9) and Llansantffraid-ym-Mechain (Bulldog Road Book Page 49/Historic Road Book Page 32 - Diagram 12)

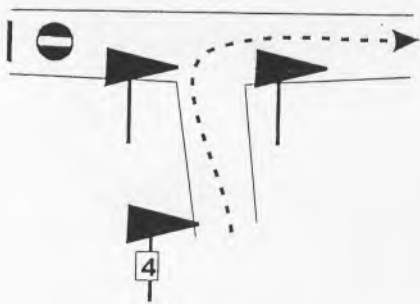
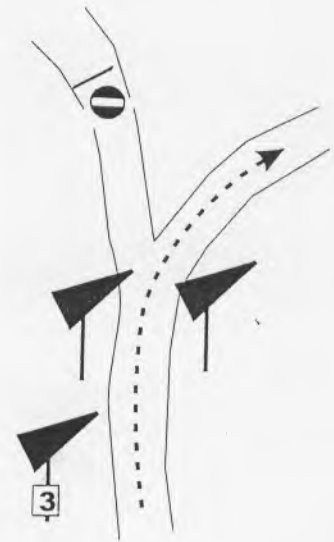
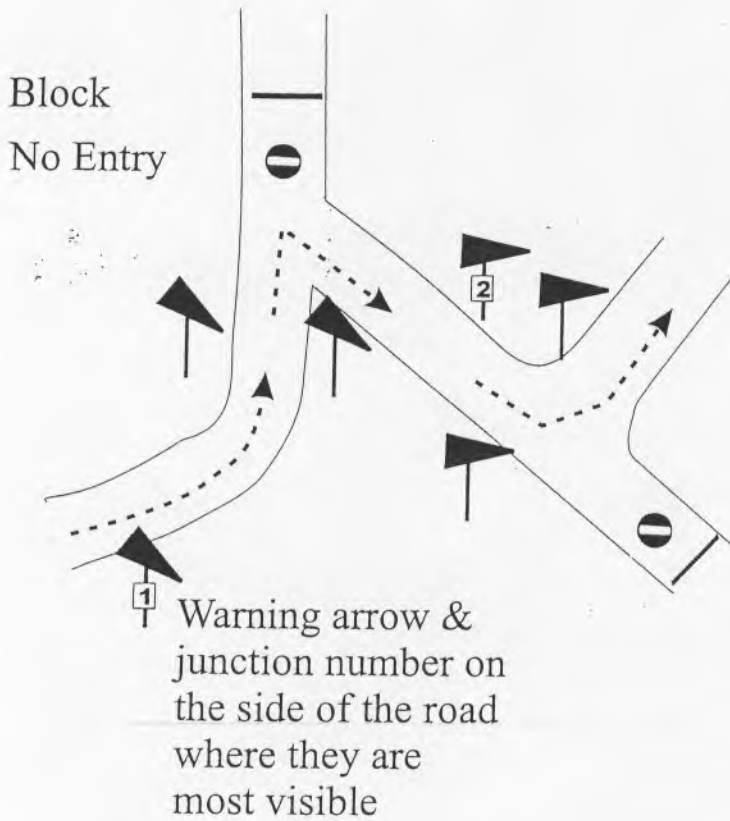
The Organisers

17 October 2001

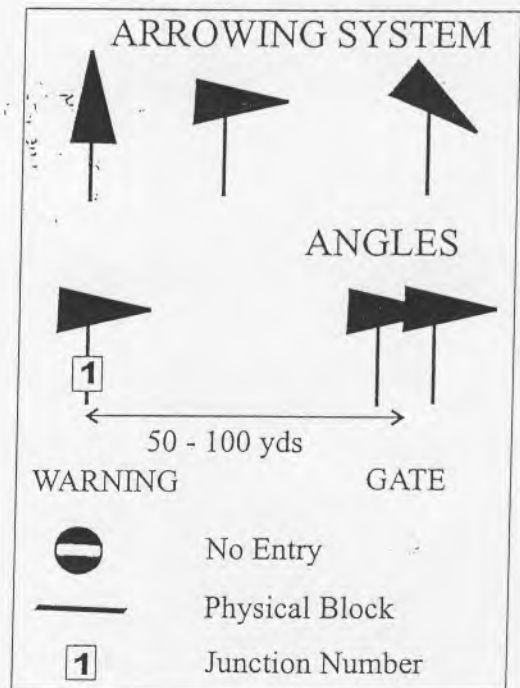
# STAGE ARROWING SYSTEM

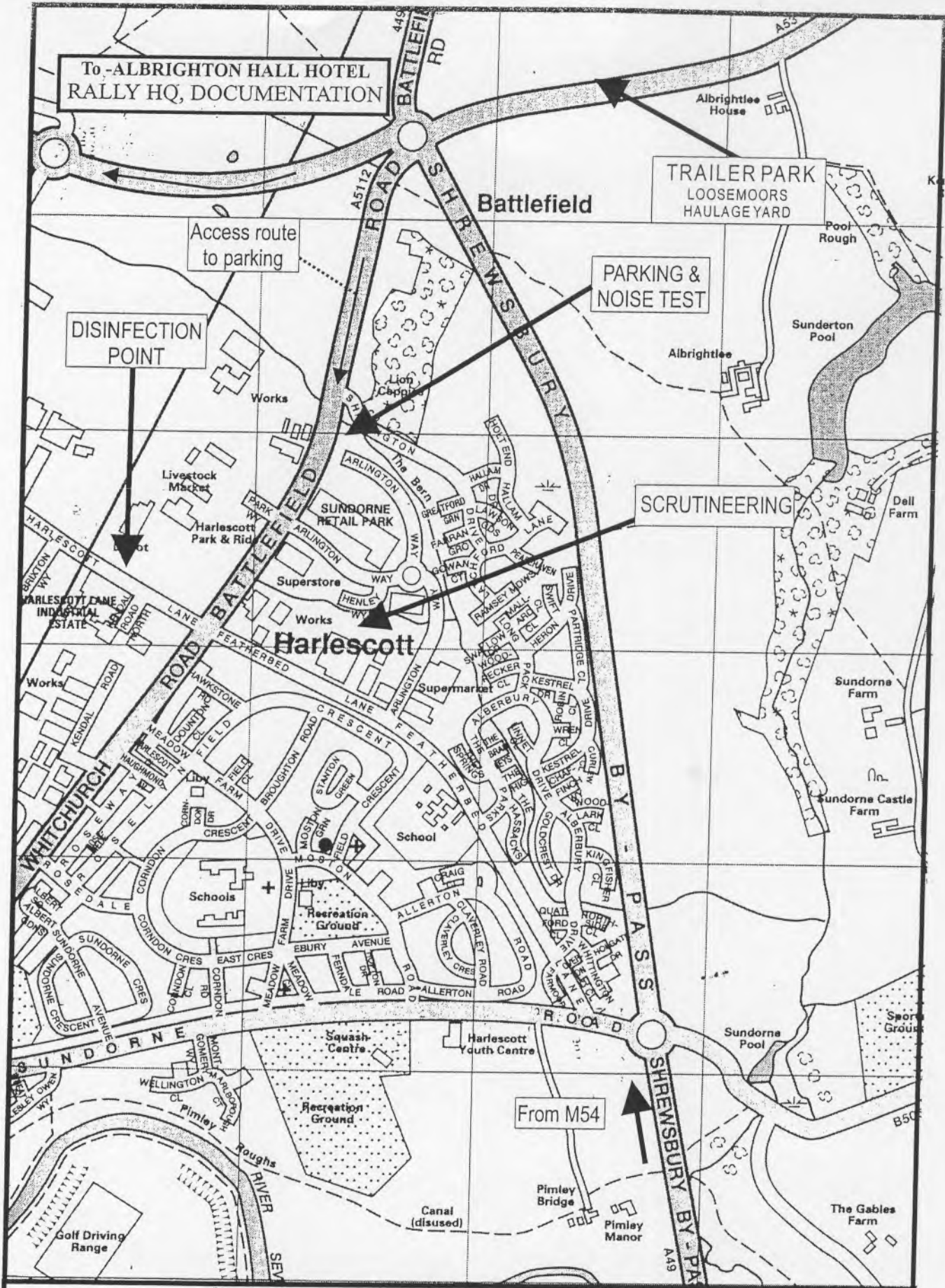
Position of arrows at JUNCTIONS in conjunction with No Entry boards.

It should be noted that the gate formed by two arrows is always immediately before the junction on the approach road and to avoid ambiguity, where necessary, the angle of directional change will be exaggerated. Incorrect roads will have 'No Entry' boards and will be blocked but not necessarily at the junction. The junction number (indicated in the road book) will be fixed to the warning arrow.



NB NO CONFIRMATION ARROWS





**SHREWSBURY scrutineering**  
**BULLDOGRALLY 2001**

# THE BULLDOG RALLY 2001

## Competitors Information Number 3

### Management Car Route Errata ( Bulldog Rally only)

Page 13b Diagram 19 should indicate a left junction at which management cars turn left – the direction information is correct.

### Route Notes Errata – All systems

#### Notes 1-7

SS1 & 8	page 1	continuation box	should read L3 <b>40</b>
	page 6	continuation box	should read L1 → <b>R5</b>
	page 12	continuation box	should read 30 <b>R3</b>
	page 13	continuation box	should read L2 Lg> <b>L6</b>

#### Notes Descriptive

SS1 & 8	page 1	continuation box	should read FML <b>40</b>
	page 6	continuation box	should read EL → <b>KR</b>
	page 12	continuation box	should read 30 <b>FMR</b>
	page 13	continuation box	should read FL Lg> <b>SqL</b>

#### Notes 7-1

SS1 & 8	page 1	continuation box	should read L5 <b>40</b>
	page 6	continuation box	should read L7 → <b>R3</b>
	page 12	continuation box	should read 30 <b>R5</b>
	page 13	continuation box	should read L6 Lg> <b>L2</b>

### All systems

SS4	page 4	line 5	junction no. should read <b>[7 – 10.45]</b>
-----	--------	--------	--

## Route Notes Update – 7-1

SS1 & 8	page 4	line 1	L5/Junc	slippy
		line 4	L3	slippy
		line 5	! L4	slippy
	page 7	line 4	L5	slippy
		page 8	line 2	L3
	line 3		R3	slippy
	line 4		R2 Lg	slippy
	line 5		R3	slippy
	page 10		line 5	OHPR
	page 11	line 5	L2/C	slippy
		line 1	R7/C	slippy
line 2		R1	slippy	
SS2	page 8	line 3	! R6 Kp St/C	double caution
	page 10	line 4	! C Turn HPR	muddy logs logs outside
SS3	page 1	line 2	OHPR	logs on exit
	page 2	line 4	30↓	muddy
		line 5	R3 Lg	ruts on exit
	page 3	line 2	L6	ruttet
	page 5	line 4	L5 Lg> ! 50 R4 Lg>	slippy
		line 5	R5	! slippy
	page 6	line 1	! Turn R4	slippy
SS4	page 3	line 3	L6 Lg> L2 late	! very slippy
		line 5	L5 60 R3 late	slippy
	page 4	line 1	60	slippy braking
		line 5	R4	delete logs
			Turn nar R3	delete nar
	page 9	line 2	Thru logs don't cut	delete thru logs
			L5	slippy
	page 10	line 2	R4 Lg> R3	! slippy
			70	muddy
		line 3	R2	slippy
SS5	page 6	line 5	C Turn R4 L4 R4	! slippy narrow logs
SS6	page 5	line 4	! Kink at tree L4 late R5	standing water
SS7	page 5	line 1	110	slippy
			170	slippy logs
		line 2	R2 50	slippy
line 3	L6 Lg	slippy		

## Route Notes Update – 1-7

SS1 & 8	page 4	ine 1	L3/Junc	slippy
		line 4	L5	slippy
		line 5	! L4	slippy
	page 7	line 4	L3	slippy
		page 8	line 2	L5
	line 3		R5	slippy
	line 4		R6 Lg	slippy
	line 5		R5	slippy
	page 10		line 4	OHPR
	page 11	line 5	L6/C	slippy
		line 1	R1/C	slippy
line 2		R7	slippy	
SS2	page 8	line 3	! R2 Kp St/C	double caution
	page 10	line 4	! C Turn HPR	muddy logs logs outside
SS3	page 1	line 2	OHPR	logs on exit
	page 2	line 4	30↓	muddy
		line 5	R5 Lg	ruts on exit
	page 3	line 2	L2	ruttet
	page 5	line 4	L3 Lg> ! 50 R4 Lg>	slippy
		line 5	R3	! slippy
page 6	line 1	! Turn R4	slippy	
SS4	page 3	line 3	L2 Lg> L6 late	! slippy
		line 5	L3 60 R5 late	slippy
	page 4	line 1	60	slippy braking
		line 5	R4	delete logs
			Turn nar R5	delete nar
	page 9	line 2	Thru logs don't cut	delete thru logs
			L3	slippy
	page 10	line 2	R4 Lg> R5	! slippy
			71	muddy
		line 3	R6	slippy
SS5	page 6	line 5	C Turn R4 L4 R4	! slippy narrow logs
SS6	page 5	line 4	! Kink at tree L4 late R3	standing water
SS7	page 5	line 1	110	slippy
			171	slippy logs
		line 2	R6 50	slippy
	line 3	L2 Lg	slippy	

## Route Notes Update – Descriptive

SS1 & 8	page 4	line 1	FML/Junc	slippy
		line 4	KL	slippy
		line 5	! ML	slippy
	page 7	line 4	FML	slippy
		page 8	line 2	KL
	line 3		KR	slippy
	line 4		SqR Lg	slippy
	line 5		KR	slippy
	page 10		line 4	OHPR
	page 11	line 5	SqL/C	slippy
		line 1	ER/C	slippy
		line 2	R÷	slippy
SS2	page 8	line 3	! FR Kp St/C	double caution
	page 10	line 4	! C Turn HPR	muddy logs logs outside
SS3	page 1	line 2	OHPR	logs on exit
	page 2	line 4	30↓	muddy
		line 5	KR Lg	ruts on exit
	page 3	line 2	FL	ruttet
	page 5	line 4	FML Lg> ! 50 MR Lg>	slippy
		line 5	FMR	! slippy
	page 6	line 1	! Turn MR	slippy
SS4	page 3	line 3	FL Lg> SqL late	! slippy
		line 5	FML 60 KR late	slippy
	page 4	line 1	60	slippy braking
		line 5	MR	delete logs
			Turn nar KR	delete nar
	page 9	line 2	Thru logs don't cut	delete thru logs
		page 10	line 2	FML
	line 2		MR Lg> KR	! slippy
			line 3	72 SqR
	SS5	page 6	line 5	C Turn MR ML MR
SS6	page 5	line 4	! Kink at tree ML late FMR	standing water
SS7	page 5	line 1	110 172	slippy slippy logs
		line 2	SqR 50	slippy
		line 3	FL Lg	slippy

Checked 15.10.2001

The Organisers

17 October 2001

# BULLDOG RALLY - 2001

## Start List - National A

Start Time	No	Entrant/Sponsor	Driver	Co-Driver	Car	Capacity	Class	Key
8:00	1	Sunseeker Powerboats	Marcus Dodd	John Bennie	Subaru Impreza	1998T	A8	Aa
8:01	2		David Mann	Alun Cook	Subaru Impreza	2000T	B13	AWaw
8:02	68		Stephen Finlay	Rory Kennedy	Subaru Impreza WRC	1998T	A8	
8:03	4	Integral Powertrain	Roger Duckworth	Mark Broomfield	Subaru Impreza WRC	1994T	A8	
8:04	5	R-E-D, On-Site, Michelin, Castrol	Pete Littler	Andy Marchbank	Hyundai Accent WRC	1998T	A8	AWFawn
8:05	63	JCB, Ajax Machinery	Glyn Jones	Huw Lewis	Subaru Impreza WRC	1998T	A8	
8:06	6	Tecroc Products Ltd	Vince Wetton	Joff Haigh	Mitsubishi Lancer Evo V	2000T	A8	
8:07	7	Toyota Ireland	Austin McHale	Brian Murphy	Toyota Corolla	2000T	A8	
8:08	74		Mark Perrott	Gary Mansell	Ford Escort WRC			
8:09	8	Bell Leisure/Michelin/Sabelt	Brian Bell	Paul Spooner	Ford Escort WRC	1998T	B13	AW
8:10	9	Active Motor Sport	Gary Midwinter	Martin Saunders	Ford Escort WRC	1998T	B13	AWaw
8:11	10	Bill Gwynne Motorsport / Olis / Pirelli	Runar Jonnson	Baldur Jonsson	Subaru Impreza	1998T	B13	
8:12	11	National Vehicle Distribution	Eamonn Boland	Anthony Nestor	Subaru Impreza	2000T	A8	
8:13	12		Derek McGarrity	Dermot O'Gorman	Subaru Impreza WRC	2000T	A8	
8:14	73		Stephen Harron	Sean Mulloly	Subaru Impreza	2000T		
8:15	14	MSR Motorsport	Charles Payne	Ian Allsop	Mitsubishi Lancer Evo 6	1997T	A8	
8:16	15	Minilite	Julian Reynolds	Stewart Merry	Subaru Impreza	2000T	A8	
8:17	16		Robert Ceen	Richard Ceen	Subaru Impreza	1997T	B13	AW
8:18	17	RJC Davis (Forestry) Ltd	Richard Davis	David Williams	Mitsubishi Lancer Evo V	1998T	N4	Ww
8:19	18	Technocover Ltd, Welshpool	Dave Humphreys	Ian Pryce	Mitsubishi Lancer Evo 6	1998T	N4	W
8:20	19	JV Group	Leon Pesticcio	Howard Davies	Mitsubishi Lancer Evo 6	1997T	N4	AWMaw
8:21	21	Roger Clark Motorsport Ltd	Ollie Clark	Richard Pashley	Mitsubishi Lancer Evo V	1998T	N4	
8:22	22	Pirelli, ADR Motorsport	Alistair Ginley	Andrew Bargery	Mitsubishi Lancer Evo 6	1998T	N4	A
8:23	69		Derek Crossen	Stewart McClean	Subaru Impreza	1994T	N4	
8:24	23	Kumho Tyres, Valvoline Oils	Graham Middleton	John Morgan	Hyundai Coupe Kit Car	1995	A7	Aa
8:25	24		Peter Stephenson	Allan Whittaker	Subaru P6 WRC	1998T	A8	AM
8:26	25	Havenkey Ltd	Robin Bradbury	Peter Thomas	Ford Escort Mk II	2400	B12	AWWw
8:27	26	Dunlop/Mutiny	Nigel Griffiths	Andrew Owens	Ford Escort Maxi Kit	1998	A7	Aa
8:28	27	Edington Transport, Barnstaple Radiators	Andy Burnell	Bob Rose	Skoda Felica Kit Car	1598	A6	Ala
8:29	28	Rally & Competition Equipment	Philip Squires	Michael Squires	Ford Escort RS1800	2200	B12	WFwn
8:30	29	Vulcan Technology Ltd	Mark Winkles	Noel Waugh	Mitsubishi Lancer Evo 6	1998T	N4	
8:31	67	Promax Motorsport	Philip Morgan	Marc Jones	Mitsubishi Lancer Evo 6 RS	1998T	N4	
8:32	30	Rallispec/Rallycarhire.com	Andrew Haddon	Mark Solloway	Mitsubishi Lancer Evo V	1998T	N4	
8:33	31		Edward Roberts	Garry Hunter	Ford Escort Cosworth	1999T	B12	W
8:34	32		John Ashton	Mark Lewis	Ford Escort MkII	1998	B11	w
8:35	33	David Bagshaw Homes	David Bagshaw	Sue Mee	Mitsubishi Lancer Evo 6	1998T	N4	AMa
8:36	62		Jon Ausobsky	Anne Watson	Ford Escort Cosworth	1993T	B13	A
8:37	34	OSG Motorsport (Prestatyn)	John Leckie	Graham Lewis	Subaru Impreza	1998T	N4	WFwn
8:38	35		Johnathan Wilshaw	Elizabeth Adams	Subaru Impreza	1996T	N4	
8:39	36		Simon Hughes	Phil Pugh	Peugeot 106 Gti	1587	A6	AWIFaw
8:40	37	Watts 4x4 Centre	Richard Watts	Christine Parling	Ford Escort Cosworth	1994T	B13	
8:41	38		Jeremy Nolan	Ian Oakey	Mitsubishi Lancer Evo V	1997T	N4	AM
8:42	61		Chris Martin	Ieuan Thomas	Subaru Impreza	2000T		
8:43	39	Frizzell	Graeme Presswell	Phil Cottam	Mitsubishi Lancer Evo 6	1998T	N4	AMa
8:44	66	G Cook Bodyrepairs	Geno Cook	Andrew Sankey	Peugeot 106 Super Cup	1600	A6	
8:45	40	DRJ Motorsport	Rhidian Jones	Matthew Picton	Subaru Impreza	1994T	N4	Ww
8:46	41	Valvoline, Kumho Tyres	Craig Middleton	Nathan Parry	Hyundai Coupe Kit Car	1997	A7	Aaw









Start Time	No	Entrant/Sponsor	Driver	Co-Driver	Car	Capacity	Class	Key
8:47	42	Langage Farm Dairy Products	James Harvey	Paul Arberry	Peugeot 106 Gti	1587	A6	I
8:48	43	Sporting Life.com, Honda UK, European Aviaton	Tony Jardine	Kevin Eason	Honda Integra Type R	1797	N3	
8:49	44		Arwyn Williams	Terry Moore	Mitsubishi Lancer Evo 6	2000T	N4	Aa
8:50	45		Dave Price	Richard Wheeler	Mitsubishi Lancer Evo 4 RS	1998T	A8	Ww
8:51	71	Zircon Seamless Resin Floors	John Coates	Gavin Heseltine	Subaru Impreza	1994T	B13	
8:52	46	www.Rallyspares.com	David Pearson	Michael Grosvenor	Ford Escort Cosworth 4x4	2000T	B13	
8:53	47	Peter Posh Formal Suit Hire of Telford	Duncan Williams	Mark Freeman	Peugeot 106 Gti	1587	N2	WICw
8:54	48	Powerhouse	John Vancamp	Alan Brown	Mitsubishi Lancer Evo V	1998T	N4	Aa
8:55	49		Stuart Clarke	Nigel Thomas	Ford Escort	1598	B10	Wlw
8:56	50	Brookwood Motor Company	Richard Waite	Darren Hutt	Subaru Impreza	2000T	B13	Aa
8:57	51	Sunseeker Powerboats	Harry Dodd	Roy Campbell	Subaru Impreza	1998T	N4	Aa
8:58	52	MTW Sport	Rupert Hopcraft	Susan North	Nissan Micra	1275	A5	I
8:59	53	MCD Vtech Automotive	Steve Aram	Paul Aram	Nissan Micra	1275	A5	
9:00	54	Thor Hammers	John Moffat	Justin Brooks	Talbot Samba	1360	B9	A
9:01	65	R & M Williams	Mark Williams	James Phillips	Mitsubishi Lancer Evo 6	1998T	N4	
9:02	55	Irmscher Motorsport & Dunlop	Dave Hull	Pamela Hull	Vauxhall Astra Sport	1998	N3	AWlaw
9:03	64		Dorian Rees	Eurig Evans	Peugeot 106	1360	N1	AWlw
9:04	56		Nick Tate	Barry Young	Vauxhall Astra	1998	N3	Ala
9:05	70	Competition Car Insurance	Nik Kershaw	Howard Cooper	Seat Ibiza GTi 16v	1994	A7	Wlw
9:06	57	22 Motorsport	Andrew Coley	Tim Slattery	Seat Ibiza	1998	A7	Aa
9:07	58	Informix Software	Danny Kent	Robin Hernaman	Peugeot 106 Rallye	1294	N1	A
9:08	59	ASW Motorsport	Sue Hedley	Les Holden	Vauxhall Nova Gsi	1600	A6	Ala
9:09	60		Shelly Taunt	Kevin Plunkett	Ford Ka	1298	A5	Aa
9:10	72		Patrick MacArthur	Linette Applegate	Peugeot 106 Rallye	1294	A5	





A,a	Driver,Co-Driver ANCRO Championship
W,w	Driver,Co-Driver Welsh National Championship
H,h	Driver,Co-Driver MSA British Historic Championship
M	Driver Mitsubishi Challenge
I	Driver Initiative 2000
F	Driver RED ANWCC Forest Championship
N	Driver ANWCC Novice Championship
R	Driver ANWCC Allrounder Championship
C	Driver WSSCC Award
n	Co-Driver ANWCC Championship

## Bulldog Rally 2001 Competitors information No. 5

Due to circumstances beyond our control the access to stage 5 is impassable. The tulip diagrams below indicate the revised route. Please be very careful between tulips 5 and 6 as this will now be two way traffic.

RS	4	DYFI MAIN	FTC4	FTC4 TIME	PAGE	27
via	4	TO	ATC5	TARGET	15 MINS	DISTANCE 4.63 MILES
PC	4	PANTPERTHOG		DUE		AVERAGE 18.52 MPH
MILES		DIRECTION	INFORMATION	MILES to TC		
TOTAL	INTERVAL					
0.00	0.00		FTC4			4.63
0.19	0.19		Onto asphalt.			4.44
0.60	0.41		PC4 - Hand in time cards.	↕		4.03
2.27	1.67		<div style="border: 1px solid black; padding: 2px; display: inline-block;">PANTPERTHOG</div>	↕		2.36
2.34	0.07			↕		2.29
2.60	0.26		Onto gravel. Emergency service along exit road from stage. Do not block exit road.	↕		2.03

Bulldog Rally 2001

RS	4	DYFI MAIN	FTC4	FTC4 TIME		PAGE	28
via	4	TO		TARGET	15 MINS	DISTANCE	4.63 MILES
PC	4	PANTPERTHOG	ATC5	DUE		AVERAGE	18.52 MPH
MILES		DIRECTION	INFORMATION	MILES to TC			
TOTAL	INTERVAL						
3.60	1.00				1.03		
4.63	1.03		ATC5		0.00		
4.71	0.08		SS5				

Bulldog Rally 2001