

SAFETY

SAFETY MANUAL

CONTENTS

1. Introduction
2. Who's Who
3. Radio Call Signs - Officials
4. Content of Safety Cover & R.V. POINTS
5. Radio Procedure
6. Safety Procedure
- 7..Stage Plans and Personnel.
R.V.POINT MAPS

Thank you for giving your assistance on this years Bulldog Security Products Midland Rally.

Please ensure that all relevant people under your control read and understand this manual prior to the event getting under way.

This manual has been compiled for a number of reasons, namely

1. To provide you with adequate information to enable you to carry out your duties effectively.
2. To provide a common standard of organisation throughout the event so that no misunderstandings happen in the area of safety.
3. To ensure that the event maintains a high standard of safety organisation.

If you have any problems or queries after reading this manual please contact either of the Safety Officers , or any senior official without delay.

Once more , may we thank you for your assistance and have an enjoyable, safe days sport.

RACMSA STEWARD	Bill Troughear
STEWARDS	Eric Cheetham John Skinner
CLERK OF THE COURSE	John Trevethick
DEPUTY CLERKS OF THE COURSE	Ray Lloyd Gareth Thomas
SECRETARY OF THE MEETING	Andrea Johnson
EVENT SAFETY OFFICERS	Kevin Page Mervyn Johnson
CHIEF MEDICAL OFFICER	Dr Ian Picton Robinson
ENTRIES SECRETARY	Tracy Seymour
DRIVING STANDARDS OBSERVER	Jack Romain
NOISE TEST OFFICIAL	John Arnold
H.Q. CO ORDINATOR	Jane Houghton
COMMUNICATIONS OFFICER	Harold Hicken
AREA CONTROLLERS	Andy Pickering Jim Cornes, Dave Talbot John Fox, Nigel Dawes Phil Jones

SPECTATOR CONTROL CAR	SPEC 1
COURSE CAR	WOLF 2
DEPUTY Cof C (Ray Lloyd)	WOLF 1
DEPUTY Cof C (Gareth Thomas)	WOLF 4
COURSE CLOSING CAR 1	CLIP ALPHA
SAFETY OFFICER (Kevin Page)	WOLF 5
SAFETY OFFICER (Mervyn Johnson)	WOLF 9
CHIEF MEDICAL OFFICER	
CHIEF MARSHAL	WOLF 3
COMMUNICATIONS CONTROL	
DYFI BLOCK	CLIP CONTROL
OTHER	CLIP LINK
AREA CONTROLLERS	
DYFI (Andy Pickering)	WOLF 10
PANTPERTHOG (John Fox)	WOLF 11
HAFREN (Dave Talbot)	WOLF 12
MYHERIN / TARENIG (Nigel Dawes)	WOLF 13
GARTHEINIOG (John Corns)	WOLF 14
SERVICES(Phil Jones)	WOLF 6

The event safety cover consists of the following:

7 Doctors + CMO

7 Rescue Ambulances

7 Recovery units

THE R.V. POINTS FOR AMBULANCE / FIRE ARE:

R.V POINT 1

STAGE 1

PHONE BOX PONT LLANAFAN

MAP REF: 135 / 686714

R.V. POINT 2

STAGE 2

Jn A4120/B4574

DEVILS BRIDGE

MAP REF: 135 / 742770

R.V POINT 3

STAGE 3

STAGE EXIT

A44 7 MILES WEST OF

LLANGURIG

MAP REF: 135 / 841827

R.V. POINT 4

STAGE 4

PHONE BOX

STAYLITTLE

MAP REF: 135 / 887922

R.V POINT 5

STAGE 5, 7 & 8

THE BRIGANDS INN

MALLWYD

MAP REF: 124 / 863125

R.V. POINT 6

STAGE 6

BRAICH GOGCH INN

CORRIS

MAP REF: 124 / 754075

Ensure that your set is monitored at all times so that you can be contacted quickly for any assistance and advice required.

If you have to leave your set at any time during the event, let the controller know and how long you expect to be out of contact. Sign back on to the network on return to your set.

All radio communications will be routed through the radio controller who will show that he has finished the current messages by stating that he is 'CLEAR ' or 'STANDBY' The **only** exception to this is where, due to communication problems, the controller may use a link to contact you.

THIS WILL BE ORGANISED BY THE CONTROLLER ONLY.

Initiate your transmission by the call sign you wish to speak to followed by your own call sign.

i.e. for example 'Auto Clip Control from Auto Wolf 5'

The controller will then ask Auto Wolf 5 to 'Go Ahead' with his message and deal with it appropriately.

So that you may indicate to the controller the urgency of your message, you may include one of the following key words in your initial call to the controller, if appropriate.

SAFETY for messages concerning stage safety. e.g. car overdue arrowing problems, spectator marshalling problems, where a slight delay in action may be tolerated.

URGENT for situations requiring immediate action. e.g. car known to be in difficulty, suspected injuries, stopping further traffic entering the stage.

PRIORITY for confirmed situations involving injury
e.g. SOS Board displayed immediate rescue services required

Please use common sense DO NOT OVERSTATE URGENCY

RADIO PROCEDURE CONTINUED

If you hear a call made, it could be that you have relevant information that will help. It will assist the controller if you call him using the keyword RELEVANT and await his reply.

e.g. 'Auto Clip Control from Auto Wolf 5 - Relevant.'

All other radios with no involvement should remain silent until told that the incident is over or until called by control, unless a further incident occurs.

Make your message brief and clear, and indicate when it is complete with 'over' or the use of 'out' at the end of your final transmission.

When reporting an incident be prepared to supply:

Location of incident relevant to your location.

Car(s) number involved.

Whether there is an SOS board on display.

Whether there is any injury.

Whether there is any risk of fire.

Whether there is any risk to following cars.

Whether there is any stage blockage.

All radio crews should keep the supplied radio check sheets up to date for each stage run, so that they can immediately report the number of cars and specific car numbers if so requested by control.

All headcounts of cars past your location should be given as competitors only and NOT include course cars etc.

Standard radio procedures will be in operation (see section 5), whereby all radio traffic will be channelled through the controller who will ensure that all transmissions are kept short and to the point.

When an incident occurs the nearest radio crew should report the facts to the radio controller who will pass them on to the relevant official for action.

If a competitor goes off but regains the course in the correct direction, you need not report it unless he is obviously cutting the stage in an attempt to gain an advantage.

When reporting an incident be prepared to supply the following information and subsequent updates to it;

Location of incident

Car (s) number involved.

Whether there is any injury

Whether there is a risk of fire.

Whether there is any risk to following cars

Whether there is any stage blockage (if there is record the numbers of the cars affected for later use in results, pass this information to the course closing car).

Based on the information supplied a decision will be taken as to the appropriate course of action by the Stage Commander. That decision will be relayed to all relevant parties via radio control.

However serious an incident appears, **NO OFFICIAL VEHICLE IS TO BE ALLOWED INTO OR ACROSS THE STAGE UNTIL DIRECTED TO DO SO** by the Stage Commander, Deputy Clerk of the Course or Safety Officer, either in person or via radio control.

SAFETY PROCEDURE CONTINUED.

The directive for a Rescue, Recovery or Doctors vehicle to move will be accompanied by an explicit route to be taken, as even when a stage has been stopped, competing cars are possibly still running at competitive speeds within the stage.

In the case of serious injury, the organisers will consult with the Chief Medical Officer for medical advice relating to the containment of injury and any requirement for County Emergency services, if necessary.

Any call to County Emergency Services will be via radio controller, or by standard 999 procedures if the mobile phone signal is insufficient. Quote the name of the organising club, the event name, the location and the appropriate R.V.Point.

If the call is made by 999, the call should be made by a stage official, with a radio, who should have the R.V.Point details supplied with him, and they shall remain at the telephone for co-ordination purposes, if required.

If the County Emergency Service need to go to the stage, the stage commander shall send a stage official with a radio to the relevant R.V.Point to escort them to the stage.

An Incident Report form shall be completed by all Rescue, Doctors and Stage commander in the event of any personal injury and ensure that the form is returned to Rally H.Q. as quickly as possible either personally or by the course closing car.

All activities within the service area should be done in consideration of the RACMSA Health and Safety guidelines.

Refuelling is permitted within the competitors service bay
All refuelling, where ever performed, must be performed in accordance with the Health and Safety guidelines regarding number of personnel, fuel containers and minimum safety zone.

The service area will be patrolled to advise and observe compliance with the above safety guidelines/

The following pages contain the following:

Individual stage plans .

R.V.Point details

All personnel allocated to those stages.

Incident report forms

Radio check Sheets

Time Table including rescue service due times.

INCIDENT REPORT FORM

STAGE:.....

STAGE COMMANDER.....

CAR No (s) INVOLVED.....

LOCATION OF INCIDENT:.....

TIME INCIDENT REPORTED:.....

TIME STAGE STOPPED:.....

OTHER CARS AFFECTED BY INCIDENT:.....

DETAILS OF INJURIES AND MEDICATION GIVEN:

DRIVER:

NAME:.....

.....

.....

MEDICATION:.....

CO-DRIVER:

NAME.....

.....

.....

MEDICATION:.....

OTHER: NAME (S):.....

.....

.....

MEDICATION:.....

**THIS REPORT FORM MUST BE RETURNED TO
RALLY H.Q. AS SOON AS POSSIBLE, EITHER
PERSONALLY OR BY THE COURSE CLOSING CAR.**

TIME SCHEDULE

STAGE 1 LLANAFAN	
HISTORIC CAR 1 DUE	8.57
NATIONAL A CAR 1 DUE	9.52
STAGE 2 MYHERIN	
HISTORIC CAR 1 DUE	9.20
NATIONAL A CAR 1 DUE	10.15
STAGE 3 TARENIG	
HISTORIC CAR 1 DUE	9.33
NATIONAL A CAR 1 DUE	10.28
SERVICE A	
STAGE 4 HAFREN	
HISTORIC CAR 1 DUE	10.25
NATIONAL A CAR 1 DUE	11.20
NATIONAL B CAR 1 DUE	12.50
STAGE 5/8 GARTHEINIOG	
HISTORIC CAR 1 DUE	11.28
NATIONAL A CAR 1 DUE	12.23 & 15.09
NATIONAL B CAR 1 DUE	13.53
SERVICE B	
STAGE 6 PANTPERTHOG	
HISTORIC CAR 1 DUE	13.30
NATIONAL A CAR 1 DUE	14.25
NATIONAL B CAR 1 DUE	15.55
STAGE 7 DYFI MAIN	
HISTORIC CAR 1 DUE	13.52
NATIONAL A CAR 1 DUE	14.47
NATIONAL B CAR 1 DUE	16.17

R.V. POINT 6
STAGE 6
BRAICH GOGCH INN
CORRIS
MAP REF: 124 / 754075

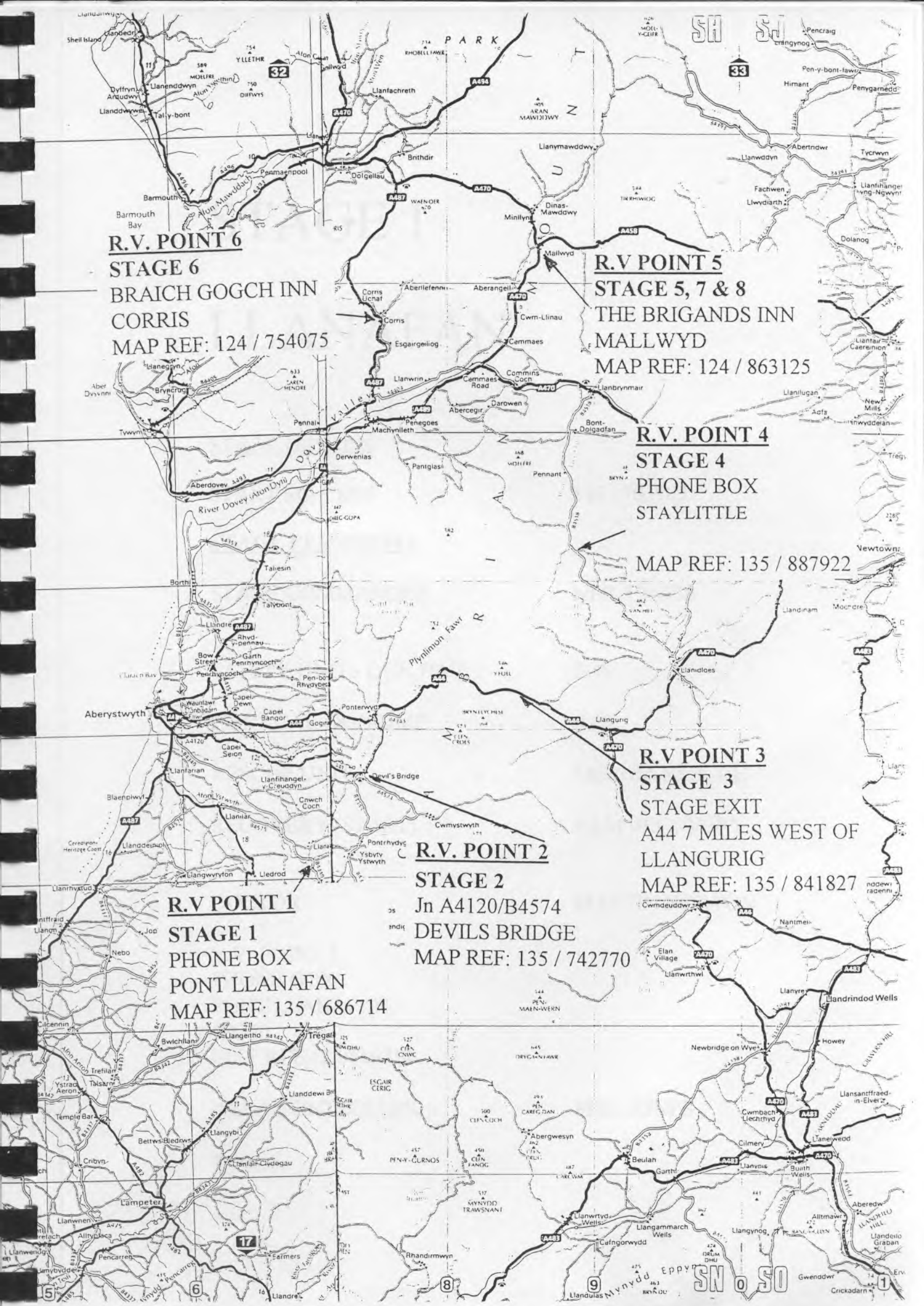
R.V. POINT 5
STAGE 5, 7 & 8
THE BRIGANDS INN
MALLWYD
MAP REF: 124 / 863125

R.V. POINT 4
STAGE 4
PHONE BOX
STAYLITTLE
MAP REF: 135 / 887922

R.V. POINT 3
STAGE 3
STAGE EXIT
A44 7 MILES WEST OF
LLANGURIG
MAP REF: 135 / 841827

R.V. POINT 2
STAGE 2
Jn A4120/B4574
DEVILS BRIDGE
MAP REF: 135 / 742770

R.V. POINT 1
STAGE 1
PHONE BOX
PONT LLANAFAN
MAP REF: 135 / 686714



STAGE 1

LLANAFAN

STAGE DETAILS

START MAP REF: 135 / 703703

STAGE PERSONNEL

STAGE COMMANDER NEIL CROSS

SAFETY UNITS DUE TIME : 7.30

FIRST CAR DUE TIME: 8.57

RESCUE UNIT MERCIA RESCUE

RECOVERY (START) RAM RECOVERY

DOCTOR MARTIN NORTON

R.V. POINT 1
PHONE BOX
PONT LLANAFAN
B4340
MAP REF:135/686714

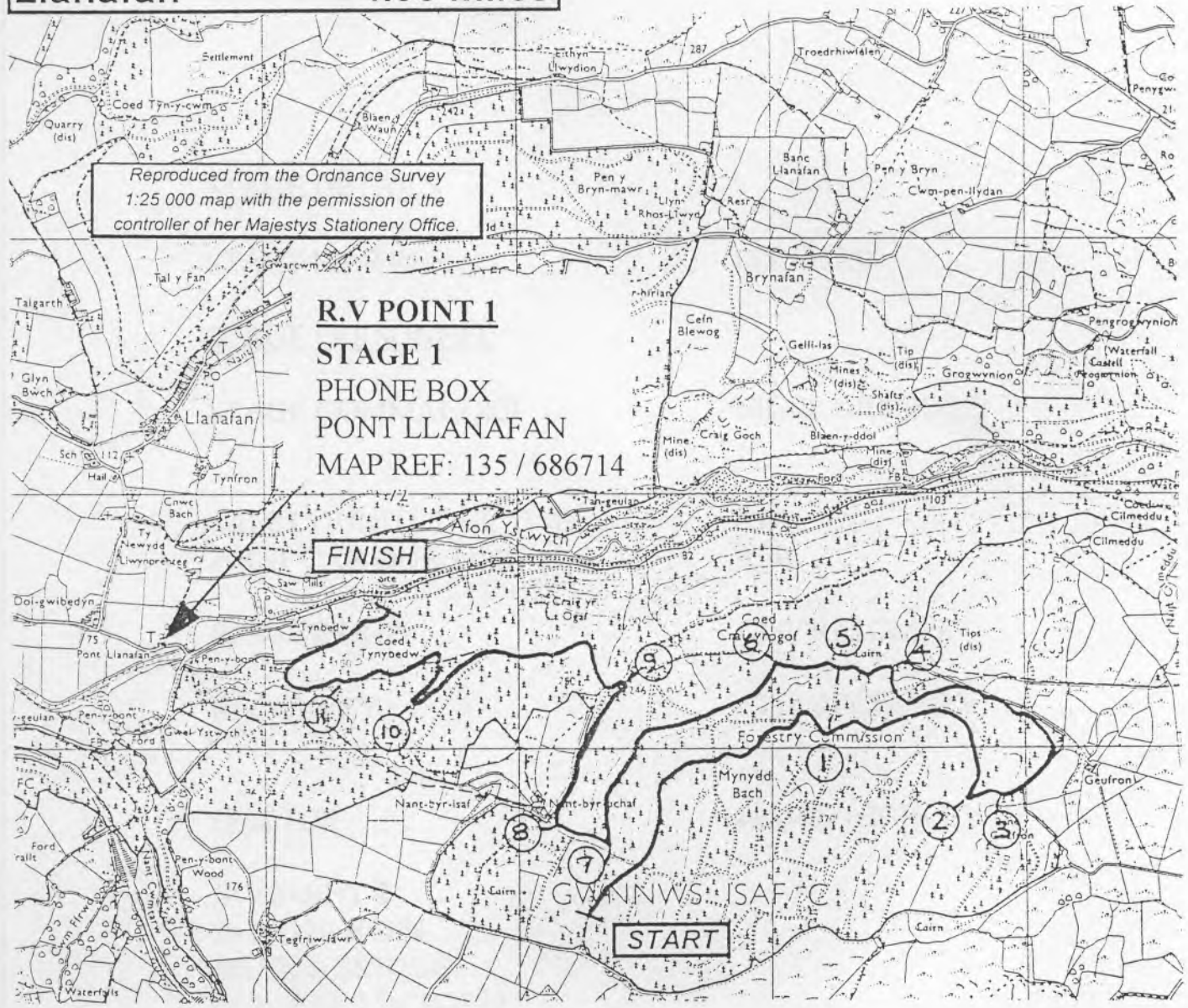
AREA CONTROLLER PHIL JONES

Special Stage 1

Llanafan 4.95 miles

Reproduced from the Ordnance Survey
1:25 000 map with the permission of the
controller of her Majesty's Stationery Office.

R.V POINT 1
STAGE 1
PHONE BOX
PONT LLANAFAN
MAP REF: 135 / 686714



STAGE 2

MYHERIN

STAGE DETAILS

START MAP REF: 135/765758

STAGE PERSONNEL

STAGE COMMANDER NIGEL GRIFFITHS

SAFETY UNITS DUE TIME 8.00
FIRST CAR DUE TIME 9.20

RESCUE UNIT CLIP RESCUE 2

RECOVERY CLIP RECOVERY

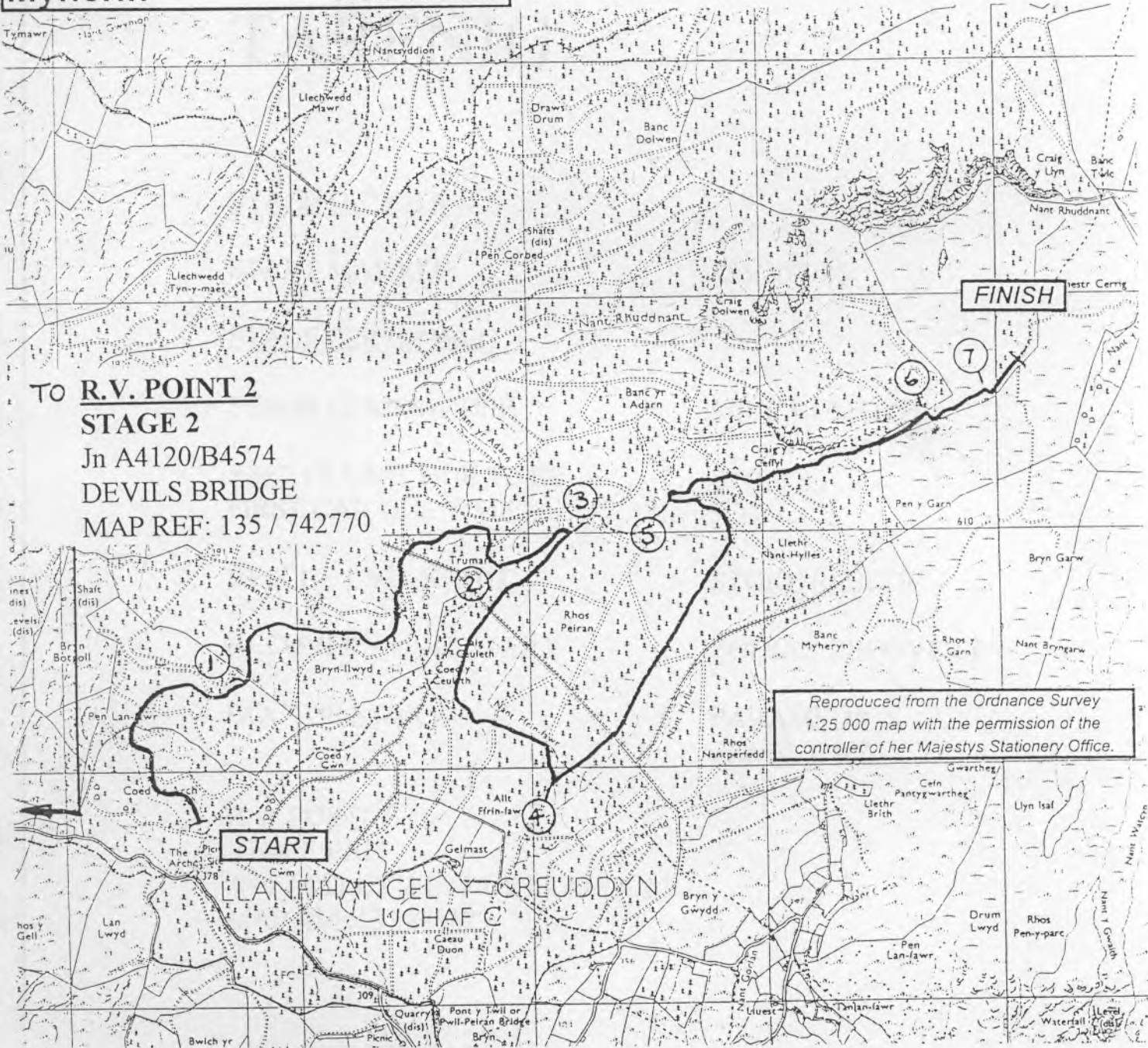
DOCTOR DAVID HIGHLEY

R.V.POINT 2
Jn A4120/B4574
DEVILS BRIDGE
MAP REF:135/742770

AREA CONTROLLER NIGEL DAWES

Special Stage 2

Myherin 4.99 miles



TO R.V. POINT 2
STAGE 2
 In A4120/B4574
 DEVILS BRIDGE
 MAP REF: 135 / 742770

Reproduced from the Ordnance Survey
 1:25 000 map with the permission of the
 controller of her Majesty's Stationery Office.

START
 LLANFANGEL Y CREUDDYN
 UCHAF

STAGE 3

TARENIG

STAGE DETAILS

START MAP REF: 135/809785

STAGE PERSONNEL

STAGE COMMANDER MIKE RUSHTON

SAFETY UNIT DUE TIME: 8.00

FIRST CAR DUE TIME 9.33

RESCUE UNIT START STOKE RESCUE

RECOVERY UNIT START ZODIAC RECOVERY

DOCTOR START
PARAMEDIC
- PAUL GAY

R.V. POINT 3
STAGE EXIT
A44 7 MILES WEST OF LLANGURIG
MAP REF:135/841827

AREA CONTROLLER NIGEL DAWES

Special Stage 3

Tarenig 9.00 miles

R.V POINT 3
STAGE 3
STAGE EXIT
A44 7 MILES WEST OF
LLANGURIG
MAP REF: 135 / 841827



Reproduced from the Ordnance Survey
1:25 000 map with the permission of the
controller of her Majestys Stationery Office.

STAGE 4

SERVICE 1

SWEET LAMB

AREA CONTROLLER

PHIL JONES
WOLF 6

STAGE 4

HAFREN

STAGE DETAILS

START MAP REF:	135/832868
STAGE PERSONNEL	
STAGE COMMANDER	JOHN CORDREY
SAFETY UNIT DUE TIME	9.00
FIRST CAR DUE TIME	10.25
RESCUE UNIT	CLIP RESCUE 3
RECOVERY	ROVER 23
DOCTOR	V.J. ANTHWAL
R.V. POINT 4 PHONE BOX STAYLITTLE 135/887922	
AREA CONTROLLER	DAVE TALBOT

TO
R.V. POINT 4
STAGE 4
PHONE BOX
STAYLITTLE

Special Stage 4
Hafren 13.20 miles

MAP REF: 135 / 887922



Reproduced from the Ordnance Survey
1:25 000 map with the permission of the
controller of her Majestys Stationery Office.

STAGE 5 & 8

GARTHEINIOG

STAGE DETAILS

START MAP REF: 124/806111

STAGE PERSONNEL

STAGE COMMANDER GRAHAM MAXWELL

SAFETY UNIT DUE TIME 10.00

FIRST CAR DUE TIME 11.28 & 15.09

RESCUE UNITS CLIP RESCUE 1

RECOVERY RUGBY RECOVERY

DOCTOR PETER D'AMBRUMENIL
MOMO 101

R.V. POINT 5
THE BRIGANDS INN
MALLWYD
MAP REF: 124/863125

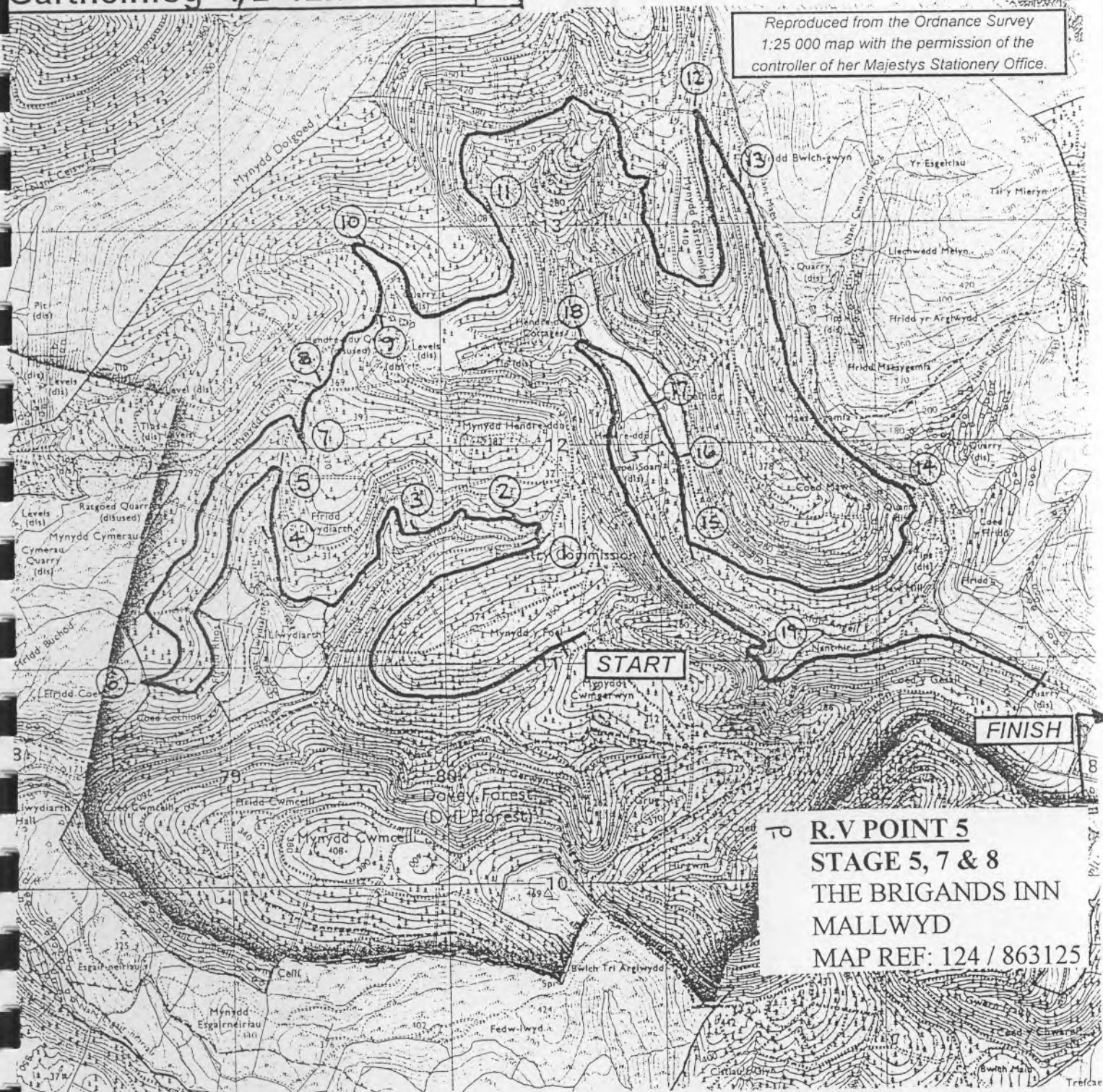
AREA CONTROLLER JOHN CORNS

Special Stage

5/8

Gartheiniog 1/2 12.77 miles

Reproduced from the Ordnance Survey
1:25 000 map with the permission of the
controller of her Majesty's Stationery Office.



R.V POINT 5
STAGE 5, 7 & 8
THE BRIGANDS INN
MALLWYD
MAP REF: 124 / 863125

SERVICE 2

DOLGELLAU

AREA CONTROLLER

PHIL JONES
WOLF 6

STAGE 6

PANTPERTHOG

STAGE DETAILS

START MAP REF: 135/748045

STAGE PERSONNEL

STAGE COMMANDER IAN JARRETT

SAFETY UNIT DUE TIME 12.00

FIRST CAR DUE TIME 13.30

RESCUE UNIT LACE RESCUE

RECOVERY FOREST RECOVERY

DOCTOR DAVID RIDER

R.V. POINT 6
BRAICH GOGCH INN
CORRIS
MAP REF: 124/754075


AREA CONTROLLER JOHN FOX

R.V. POINT 6

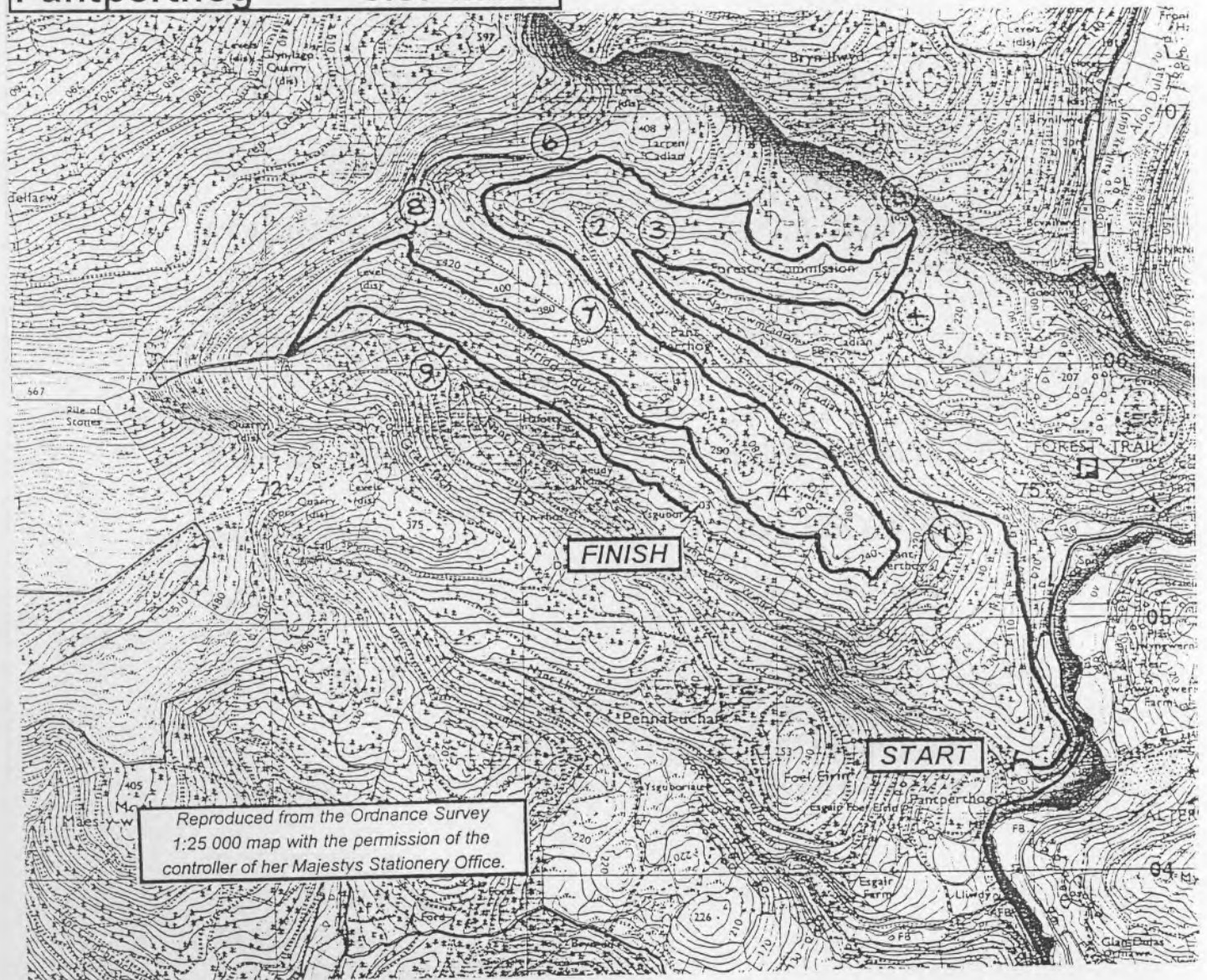
STAGE 6

BRAICH GOGCH INN

CORRIS

MAP REF: 124 / 754075 

Special Stage 6
Pantperthog 8.57 miles



Reproduced from the Ordnance Survey
1:25 000 map with the permission of the
controller of her Majestys Stationery Office.

STAGE 7

DYFI MAIN

STAGE DETAILS

START MAP REF: 124/771067

STAGE PERSONNEL

STAGE COMMANDER CYRIL LOMAS

SAFETY UNIT DUE TIME 12.30
FIRST CAR DUE TIME 13.52

START

RESCUE UNIT PHOENIX RESCUE

RECOVERY FOX RECOVERY

DOCTOR JOHN HUGHES

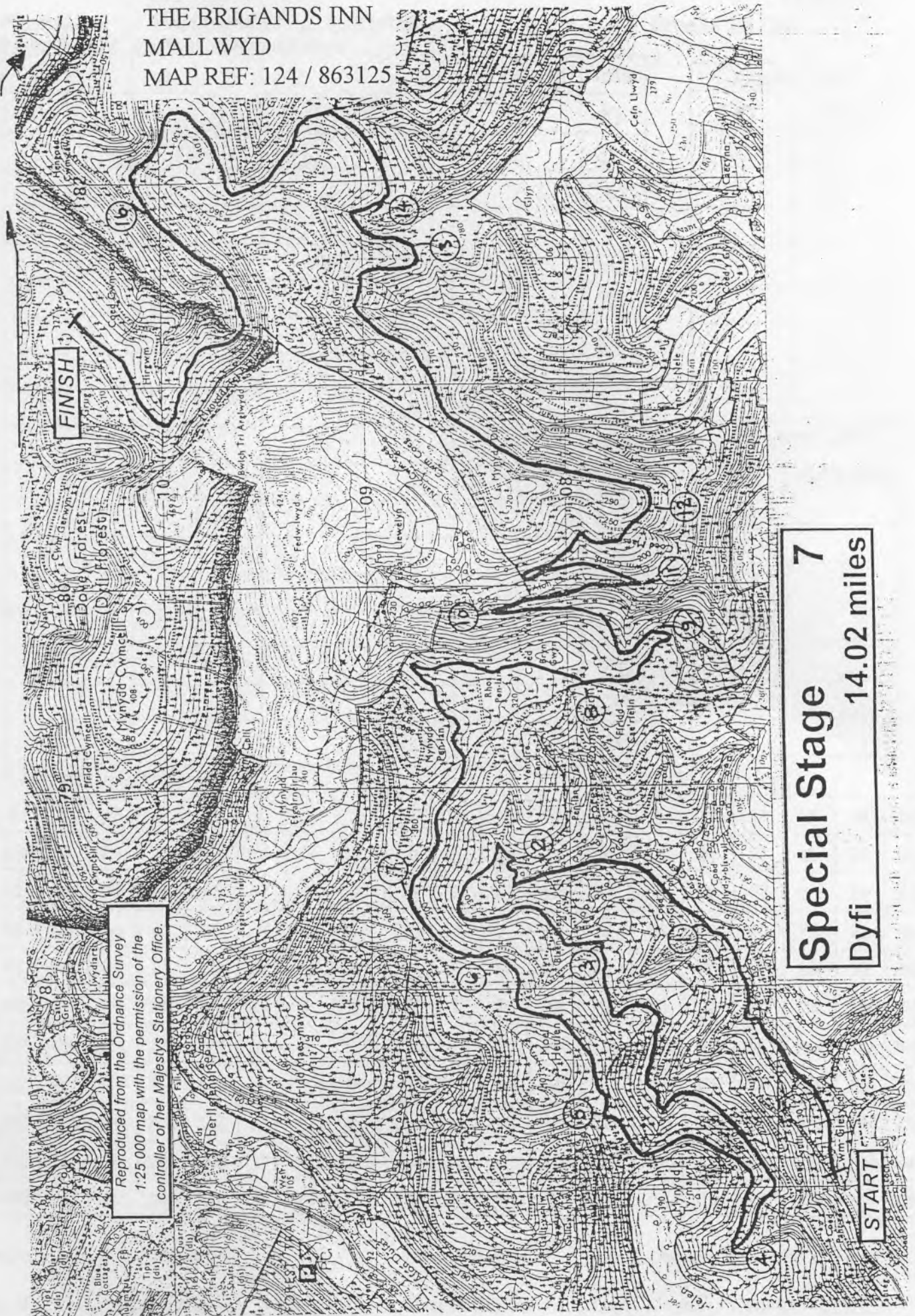
JUNCTION 11

SSU CLIP RESPONSE
DOCTOR STEVE COTTERILL

R.V. POINT 5
THE BRIGANDS INN
MALLWYD
MAP REF: 124/863125

AREA CONTROLLER ANDY PICKERING

TO
R.V POINT 5
STAGE 5, 7 & 8
THE BRIGANDS INN
MALLWYD
MAP REF: 124 / 863125



RADIO CAR CHECK SHEET

BULLDOG RALLY

Stage Number Post Number Call Sign Time of 1st Car

Fill in numbers left to right, in order as they pass

1	2	3	4	5	6	7	8	9	10	Total
										10
										20
										30
										40
										50
										60
										70
										80
										90
										100
										110
										120
										130
										140
										150
										160
										170
										180

Course Cars	
No	Time

Stopped Cars	
No	Junction

Circle each number as the car passes

1	2	3	4	5	6	7	8	9	10	11	12	13	14	15	16	17	18	19	20
21	22	23	24	25	26	27	28	29	30	31	32	33	34	35	36	37	38	39	40
41	42	43	44	45	46	47	48	49	50	51	52	53	54	55	56	57	58	59	60
61	62	63	64	65	66	67	68	69	70	71	72	73	74	75	76	77	78	79	80
81	82	83	84	85	86	87	88	89	90	91	92	93	94	95	96	97	98	99	100
101	102	103	104	105	106	107	108	109	110	111	112	113	114	115	116	117	118	119	120
121	122	123	124	125	126	127	128	129	130	131	132	133	134	135	136	137	138	139	140
141	142	143	144	145	146	147	148	149	150	151	152	153	154	155	156	157	158	159	160
181	182	183	184	185	186	187	188	189	190	191	192	193	194	195	196	197	198	199	200
201	202	203	204	205	206	207	208	209	210	211	212	213	214	215	216	217	218	219	220
221	222	223	224	225	226	227	228	229	230	231	232	233	234	235	236	237	238	239	240
241	242	243	244	245	246	247	248	249	250	251	252	253	254	255	256	257	258	259	260

Event 1 Last 3 cars

Event 2 Last 3 cars

Event 3 Last 3 cars

Time of last car hrs mins Total no.

Time of last car hrs mins Total no.

Time of last car hrs mins Total no.